



GERPS

German Emigration and
Remigration Panel Study

Individual consequences of migration in a life course perspective: Introducing the German Emigration and Remigration Panel Study (GERPS)

Conference of the European Survey Research Association, 15th to 19th July 2019

Jean Philippe Pierre Décieux¹, Nils Witte², Andreas Ette², Marcel Erlinghagen¹, Jean Guedes Auditor², Nikola Sander² & Norbert F. Schneider²

¹ University of Duisburg-Essen

² Federal Institute for Population Research (BiB)



Motivation: The GERPS-Project

“Progress has been made in understanding drivers of migration, and we have relatively good data on immigrant populations, but we lack information on how many people leave their country each year to settle elsewhere and who these emigrants are. The impact of migration on the individual [...] is only partly understood.”

(Willekens et al. 2016 in Science: 897)

- GERPS = **Aim:** to gather information on individuals leaving their (home-) country
- = **Focus:** 2 Subsamples:
- a. Individuals leaving Germany (Emigrant Sample)
 - b. Individuals that left Germany and currently returned to Germany (Remigrant Sample)
- = **Innovative Design:** register-based sample combined with Push-to-Web Approach



GERPS aims to...

- ... determine the **individual consequences of migration** for other life course domains
- ... study migration between countries from **different perspectives**
- ... collect a **novel panel dataset** on emigrants and remigrants

Consequences of international migration for...



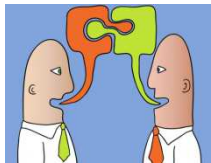
Employment and Income



Well-being and Health



Partnership and Family



Social Relations and Participation



GERPS aims to...

- ... determine the **individual consequences of migration** for other life course domains
- ... study migration between countries from **different perspectives**
- ... collect a **novel panel dataset** on emigrants and remigrants



Adopting a multi-sited approach (Beauchemin, Hugo 2014)

The DOM-Approach of GERPS (Erlinghagen et al., 2019)

- 1) **D**estination (comparison with host population)
- 2) **O**origin (comparison with German population - SOEP)
- 3) **(Individual) M**igrant trajectories or patterns



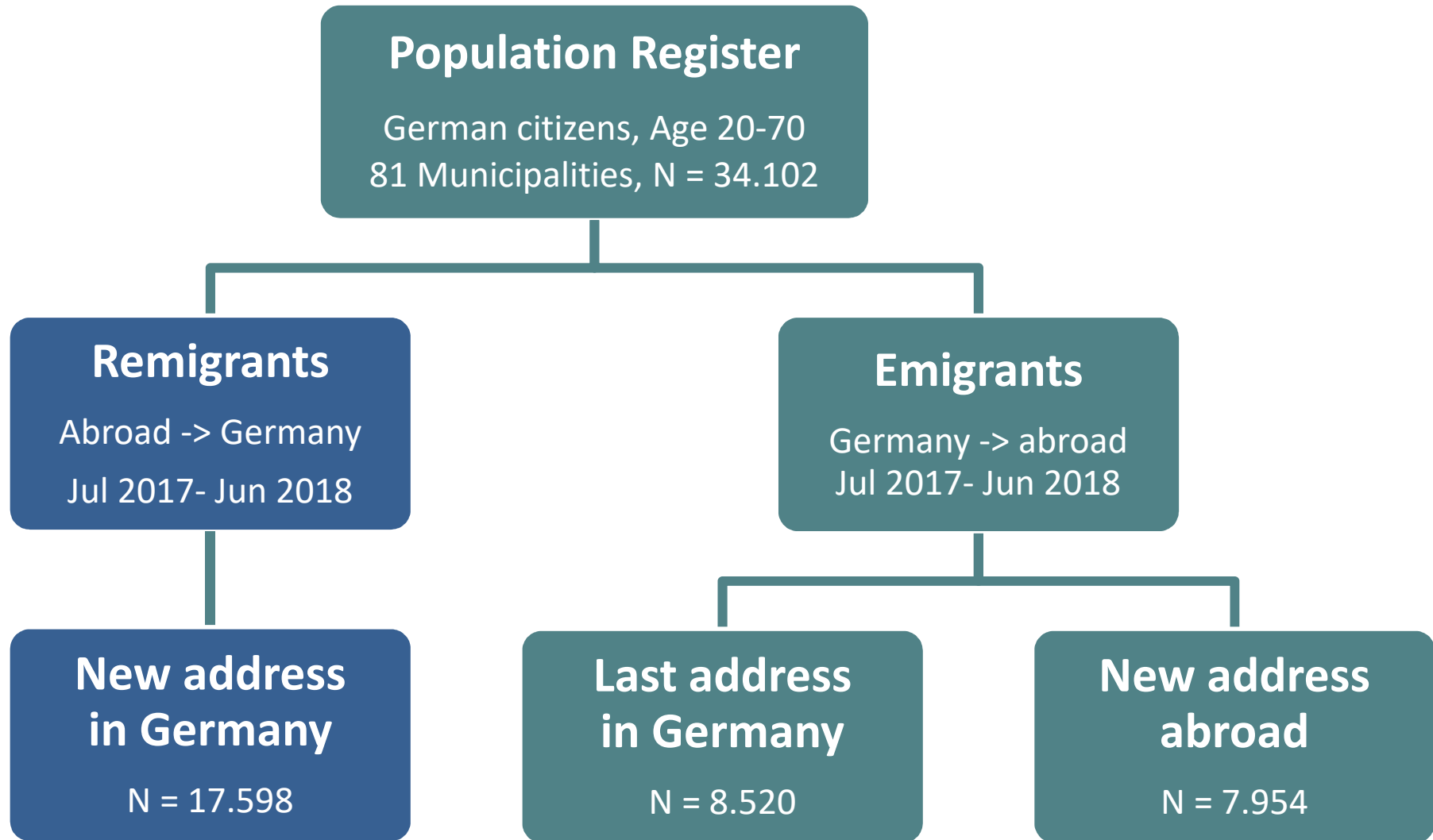
GERPS aims to...

- ... determine the **individual consequences of migration** for other life course domains
- ... study migration between countries from **different perspective**
- ... collect a **novel panel dataset** on emigrants and remigrants
 - > at least 4 waves between 2018 and 2020,
financing of further waves pending



Design and approach...

The sampling frame



Mail-Recruited Online questionnaire on...

- Postal recruitment (Wave 1)
- Online Participation
- Median Duration: 24 min.
- On..
 - Situation before the move (income, hh structure, etc.)
 - Reasons for moving, role of partner in decision for moving
 - Intentions for staying/returning (e.g. intended length of stay)
 - Previous migrations
 - Situation after the move (income, hh structure, social contact)
 - Socio-demographic characteristics, language skills, personality
 - ...
- Contact data
- Paradata





Actual and forthcoming Wave

- 2nd wave with focus on employment (field time until end of July 2019)
 - Current Employment
 - Employment history
 - Intergenerational Transmission...
- 3rd wave on family and social relations (field time starting in October 2019)
 - Structure, relationships and contact to Family members
 - Neighborhood
 - Structure, relationships and contact to friends
 - Intergenerational Transmission...
- 4th wave with an open module (field time starting in October 2020)
 - Application will be welcome in the end of 2019!



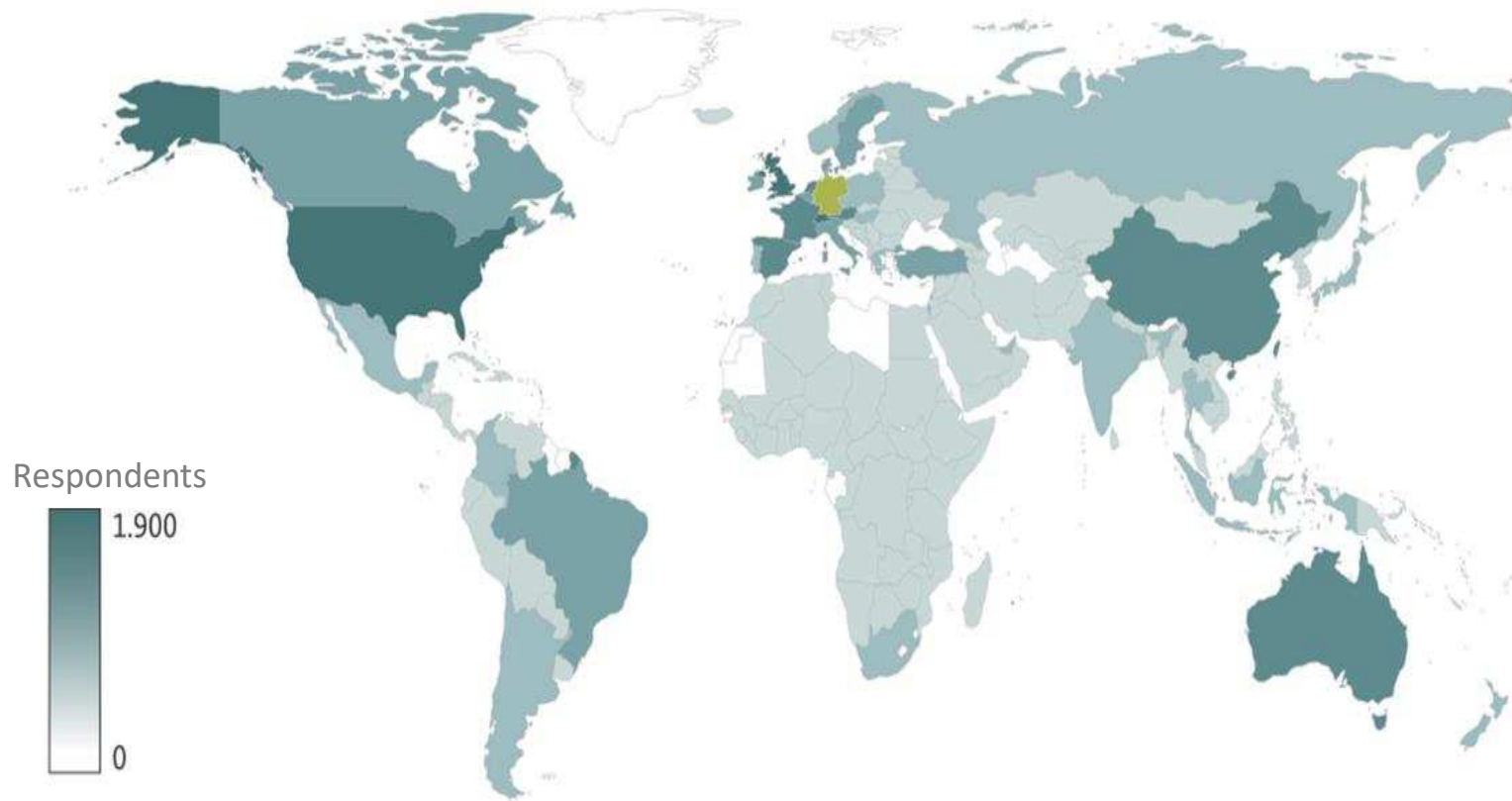
Some first results...



Response rates exceeded our expectations

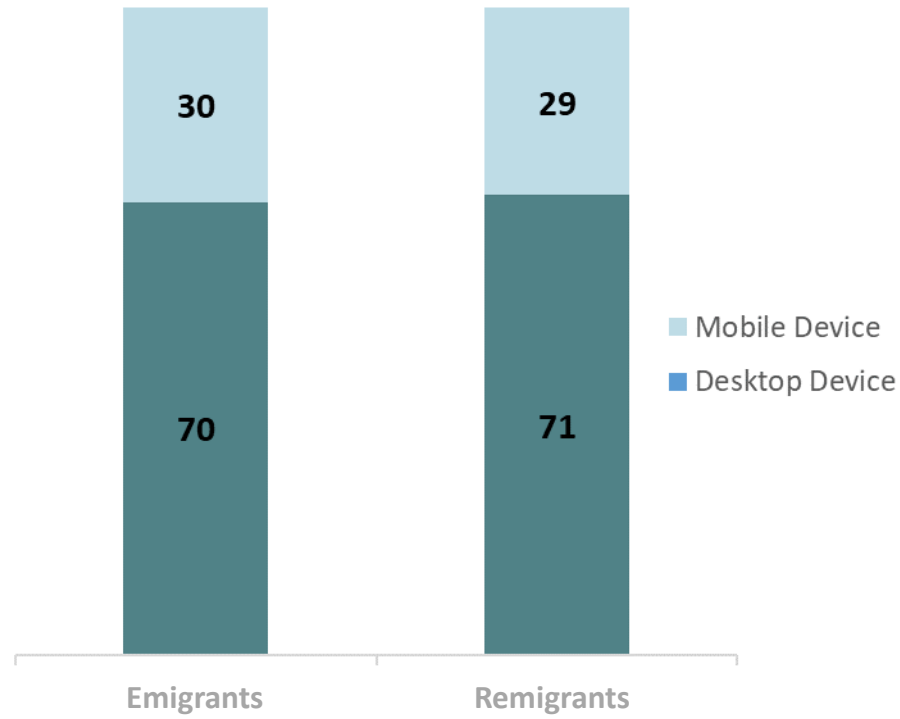
	valid addresses	completed interviews	response rate in %
Total	34,102	12,059	35.4
Emigrants	16,896	5,062	30.0
New address abroad	7,984	3,319	41.6
Last address in Germany	8,520	1,743	20.5
Remigrants	17,598	6,997	39.8

Countries of origin / destination



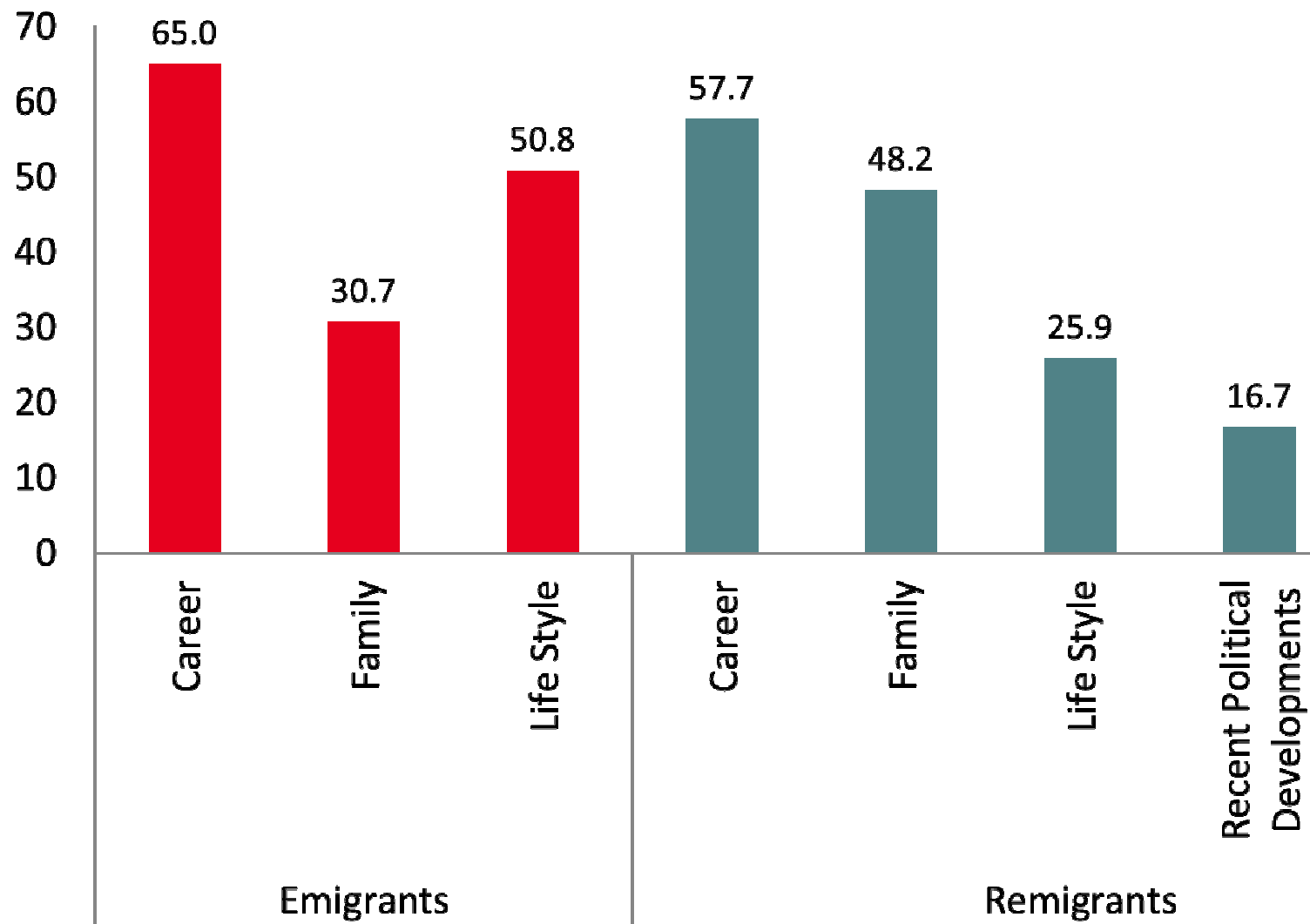
GERPS contains information on emigrants in 130 countries and on returnees from 160 countries.

Device Usage (%)

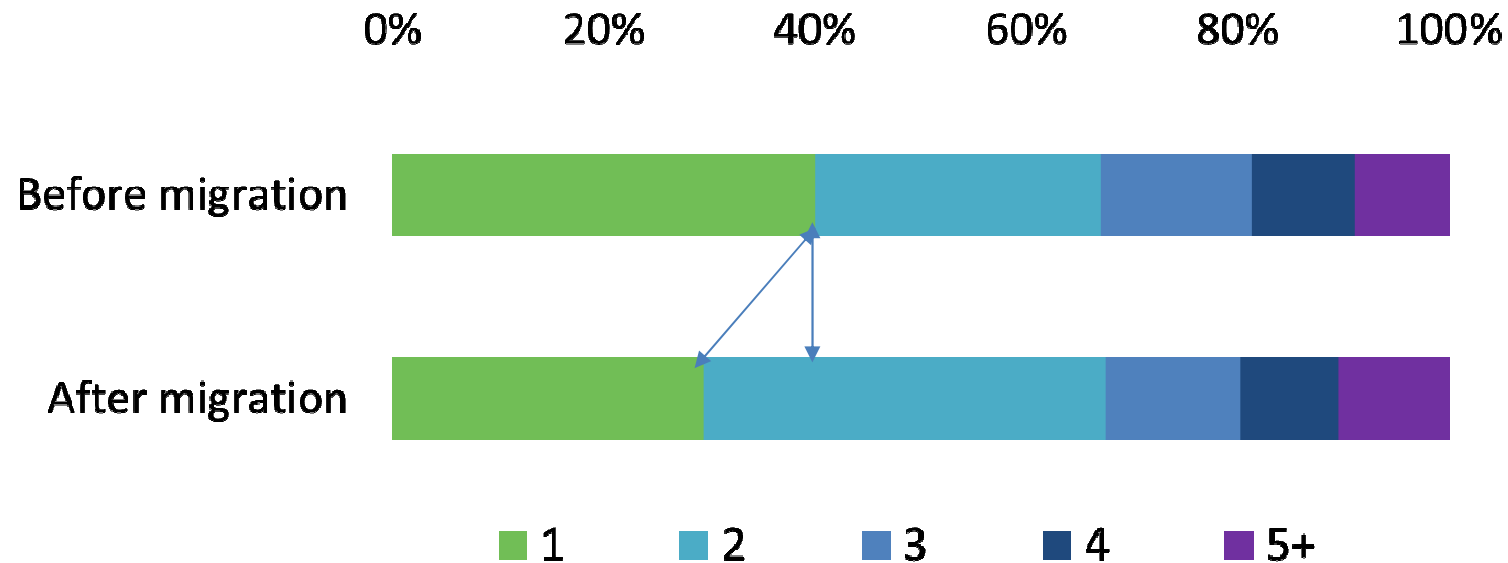


Classic reasons for moving (+Brexit)

(% saying it's important/very important)



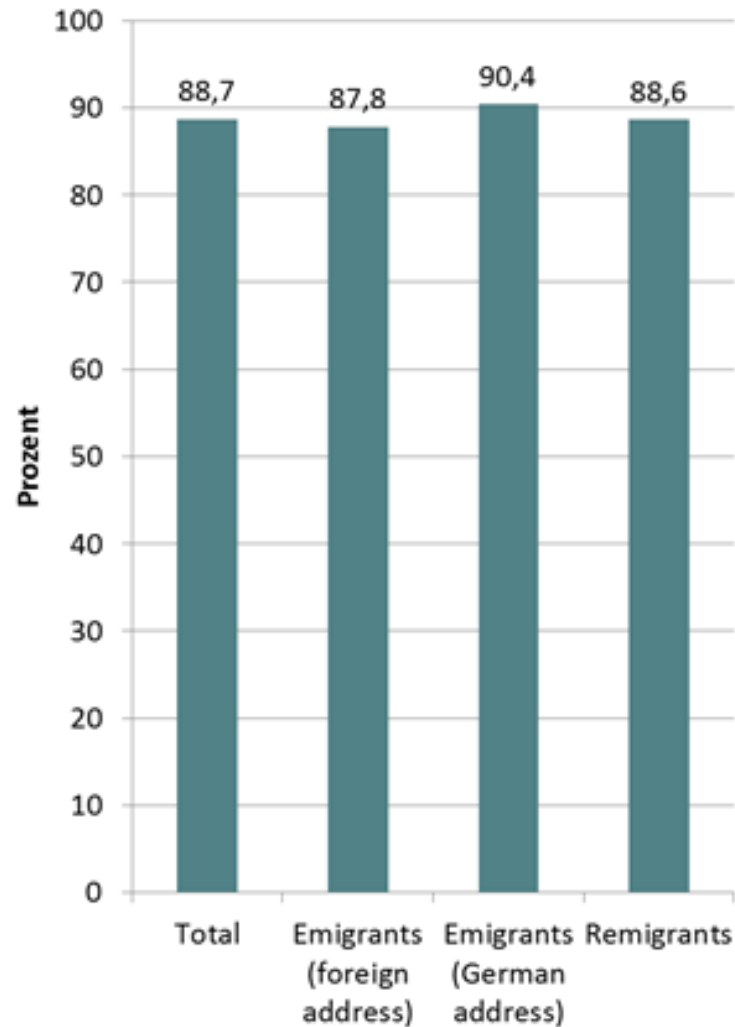
Household size among emigrants: from single to couple



→ Mainly women following their partners as „tied mover“

Consent to panel participation

Percentage of respondents willing to participate in the next waves by study group



Actual Participations in Wave 2

	addresses
Total addresses	10,333
Valid addresses	10,243
Completed interviews (17th July 2019)	
N	6949
%	67.84
Partial Completed (17th July 2019)	
N	519
%	5.07

- Response rates of wave 2 are as well satisfactory
- First step for organizing GERPS mainly as „Online Only Survey“



Summary:

German Emigration and Remigration Panel Study

- Innovative study design using a multi-sited approach
- Stepwise push to web approach
- Unique panel data on international migration
- A SOEP-related study
- Scientific website will be launched (currently:
<https://www.bib.bund.de>)
- Scientific use file (wave 1) available in spring 2020
- Collaborations and projects using GERPS data are very welcome!
- Opportunity for an application for an open question module in
Wave 4



Thank you!

Contact:

jean.decieux@uni-due.de