

A volume-averaged nodal projection method for the Reissner-Mindlin plate model

A. Ortiz-Bernardin^{a,b,*}, P. Köbrich^{a,b}, J. S. Hale^c, E. Olate-Sanzana^{a,b},
S. P. A. Bordas^{c,d}, S. Natarajan^e

^a*Department of Mechanical Engineering, Universidad de Chile, Av. Beauchef 851, Santiago 8370456, Chile.*

^b*Computational and Applied Mechanics Laboratory, Center for Modern Computational Engineering, Facultad de Ciencias Físicas y Matemáticas, Universidad de Chile, Av. Beauchef 851, Santiago 8370456, Chile.*

^c*Institute of Computational Engineering, University of Luxembourg, Maison du Nombre, 6 Avenue de la Fonte, 4364 Esch-sur-Alzette, Luxembourg.*

^d*Institute of Mechanics and Advanced Materials, School of Engineering, Cardiff University, Cardiff CF24 3AA, Wales, UK.*

^e*Department of Mechanical Engineering, Indian Institute of Technology, Madras, Chennai - 600036, India.*

Abstract

We introduce a novel meshfree Galerkin method for the solution of Reissner-Mindlin plate problems that is written in terms of the primitive variables only (i.e., rotations and transverse displacement) and is devoid of shear-locking. The proposed approach uses linear maximum-entropy basis functions for field variables approximation and is built variationally on a two-field potential energy functional wherein the shear strain, written in terms of the primitive variables, is computed via a volume-averaged nodal projection operator that is constructed from the Kirchhoff constraint of the three-field mixed weak form. The meshfree approximation is constructed over a set of scattered nodes that are obtained from an integration mesh of three-node triangles on which the meshfree stiffness matrix and nodal force vector are numerically integrated. The stability of the method is rendered by adding bubble-like enrichment to the rotation degrees of freedom. Some benchmark problems are presented to demonstrate the accuracy and performance of the proposed method for a wide range of plate thicknesses.

Keywords: meshfree methods, maximum-entropy approximation, Reissner-Mindlin plate, shear-locking, VANP method

*Corresponding author. Tel: +56 2 2978 4664, Fax: +56 2 2689 6057,
Email address: aortizb@uchile.cl (A. Ortiz-Bernardin)

1. Introduction

Shear-deformable thin-structural theories such as the Timoshenko beam and Reissner-Mindlin plate theories are widely used throughout engineering practice to simulate the mechanical response of structures with planar dimensions far greater than their thickness. The shear deformable theories’ popularity over the classical thin-structural theories, Euler-Bernoulli beam and Kirchhoff-Love plate theory, is primarily due to the following two factors:

- They capture the shear-deformable behaviour inherent to thicker structures [1, 2]. Capturing this behaviour is necessary for simulating modern engineering structures constructed from e.g. functionally graded materials [3].
- They are second-order PDEs giving rise to weak formulations with $H^1(\Omega)$ regularity, whereas the classical theories are fourth-order PDEs with weak formulations demanding $H^2(\Omega)$ regularity. The difficulty in the construction of an efficient $H^2(\Omega)$ -conforming finite element method (FEM) is well-known. In contrast, $H^1(\Omega)$ -conforming FEMs are straightforward.

Unfortunately, it is also the case that naïvely constructed low-order polynomial $H^1(\Omega)$ -conforming numerical methods suffer from shear-locking. Shear-locking is a numerical issue caused by the inability of a numerical method to represent the Kirchhoff limit as the plate thickness parameter tends to zero. This usually results in a nonconvergent numerical method, or at best, very poor convergence.

The majority of solutions to the shear-locking issue in the finite element literature resort to a mixed variational method where the transverse shear stress is treated as an independent variational quantity in the weak form. There is a huge amount of mathematical and engineering literature related to constructing plate elements for FEM analysis, which we cannot hope to do justice to here. Particularly popular examples of this approach include the Mixed Interpolation of Tensorial Components (MITC) or Assumed Natural Strain (ANS) approach [4–7], and the Discrete Shear Gap (DSG) method [8–10].

One desirable aspect of both MITC and DSG is that even though they can be mathematically analyzed using (and are based on) an underlying mixed formulation, the final systems of equations are expressed in terms of the primal unknowns of the standard Reissner-Mindlin problem only. This is achieved by the use of an operator that reduces or projects the shear stresses expressed in terms of the primal variables onto an underlying mixed finite element space. This “unlocks” the formulation.

Given the success of using mixed variational methods in constructing shear-locking free finite elements, it should be no surprise that many authors have taken this route to construct convergent methods for more modern numerical techniques, such as in Isogeometric Analysis (IGA) [11–13] and meshfree methods [9, 10, 14–17].

The work described in this paper is a continuation of the line of research presented in the PhD thesis of Hale [18] on developing meshfree methods for shear-deformable structures using mixed formulations. There the volume-averaged nodal pressure technique that was proposed in Refs. [19, 20] for the Stokes and nearly-incompressible elasticity problems and later generalized as the volume-averaged nodal projection (VANP) method [21], was adapted to the Reissner-Mindlin problem. In the VANP approach, bubble-like enrichment is used to ensure inf-sup stability [22] mimicking the MINI element [23] and the volume-averaging procedure is closely related to the average-nodal strain finite element formulation proposed in Ref. [24]. The adaptation of the VANP approach from the Stokes problem to the Reissner-Mindlin in Ref. [18] was achieved using a stabilized mixed variational formulation developed in Ref. [25]. Using this stabilization it is possible to bypass the coercivity on the kernel condition in the LBB theorem [22], opening up the possibility of using inf-sup stable designs for the Stokes problem (e.g. the MINI element [23] or the VANP operator [19, 20]) almost directly for the Reissner-Mindlin problem. This stabilization comes at the expense of the introduction of a stabilization constant. A more detailed analysis in Refs. [26, 27] shows that in a finite element context it is possible to quite precisely relate this constant to the element size and obtain good convergence rates. Unfortunately, numerical experiments to choose a good scheme for the stabilisation constant in the meshfree context of Ref. [18] were less successful.

In this paper, we develop a new meshfree scheme for the Reissner-Mindlin plate model with many of the best aspects of the formulation in Ref. [18], but with none of its drawbacks, such as reliance on a stabilization scheme with an a priori unknown constant. The scheme uses linear maximum-entropy basis functions for field variables approximation and is built variationally on a two-field potential energy functional wherein the shear strain, written in terms of primitive variables (i.e., rotations and transverse displacement), is computed via a volume-averaged nodal projection operator that is constructed from the Kirchhoff constraint of the three-field mixed weak form, which is an idea adapted from the VANP formulation of Ref. [21] and that leads to a symmetric stiffness matrix. The meshfree approximation is constructed over a set of scattered nodes that are obtained from an integration mesh of three-node triangles on which the meshfree stiffness matrix and nodal force vector are numerically integrated. We use recent advances in integration techniques for meshfree methods, e.g. the work of Duan et. al [28], to ensure efficient and accurate integration of the weak form. Bubble-like enrichment of the rotation degrees of freedom is added to ensure inf-sup stability, similarly to the recent finite element of Song and Niu [29] and many others. No further stabilization is required to ensure the stability of the discrete problem. The final system of equations is expressed in terms of the primal unknowns only, an improvement over the work of Hale [14]. Our numerical experiments show that the proposed method is optimally convergent for a wide range of thicknesses (shear-locking-free).

The remainder of the paper is given as follows. Section 2 provides a summary of the notation used in this paper. The main ingredients for the computation of the maximum-

entropy basis functions are given in Section 3. In Section 4, the classical three-field formulation for the Reissner-Mindlin plate model is summarized along with its discretization using meshfree basis functions. The VANP method for the Reissner-Mindlin plate model is developed in Section 5. Section 6 presents some numerical examples that are solved using the proposed VANP approach. We end with some concluding remarks in Section 7.

2. Notation

The following is a summary of the main notation used in this paper. Slanted bold symbols such as \mathbf{v} are used to represent vectors and tensors. In particular, the following notation is used to represent vectors in components form: $\mathbf{v} = (v_1, \dots, v_n)$ in an n -dimensional space and $\mathbf{v} = (v_x, v_y)$ in the two-dimensional Cartesian coordinate system.

Lowercase (nonbold) upright symbols are used to represent row and column vectors. Their entries are written between square brackets. For instance, $\mathbf{r} = [r_1 \ \cdots \ r_n]$ is a row vector and $\mathbf{c} = [c_1 \ \cdots \ c_n]^T$ is a column vector.

Uppercase (nonbold) upright symbols are used to represent matrices. Their entries are written between square brackets. An example of a matrix representation is given as follows:

$$\mathbf{M} = \begin{bmatrix} m_{11} & m_{12} & \cdots & m_{1n} \\ m_{21} & m_{22} & \cdots & m_{2n} \\ \vdots & \vdots & \ddots & \vdots \\ m_{n1} & m_{n2} & \cdots & m_{nn} \end{bmatrix}.$$

The gradient operator is denoted as ∇ and the trace operator as $\text{tr}(\cdot)$.

3. Maximum-entropy basis functions

Consider a convex domain represented by a set of n scattered nodes and a prior (weight) function $w_a(\mathbf{x})$ associated with each node a . The approximation for a scalar-valued function $u(\mathbf{x})$ is given in the form:

$$u(\mathbf{x}) = \sum_{a=1}^m \phi_a(\mathbf{x}) u_a, \quad (1)$$

where u_a are nodal coefficients. On using the Shannon-Jaynes (or relative) entropy functional, the max-ent basis functions $\{\phi_a(\mathbf{x}) \geq 0\}_{a=1}^m$ are obtained via the solution of the following convex optimization problem [30]:

Problem 1.

$$\min_{\phi \in \mathbb{R}_+^m} \sum_{a=1}^m \phi_a(\mathbf{x}) \ln \left(\frac{\phi_a(\mathbf{x})}{w_a(\mathbf{x})} \right)$$

subject to the linear reproducing conditions:

$$\sum_{a=1}^m \phi_a(\mathbf{x}) = 1, \quad \sum_{a=1}^m \phi_a(\mathbf{x}) \mathbf{c}_a = \mathbf{0}.$$

In Problem 1, $\mathbf{c}_a = \mathbf{x}_a - \mathbf{x}$ are shifted nodal coordinates and \mathbb{R}_+^m is the nonnegative orthant.

In this paper, we use as the prior function the Gaussian radial basis function given by [31]

$$w_a(\mathbf{x}) = \exp\left(-\frac{\gamma}{h_a^2} \|\mathbf{c}_a\|^2\right), \quad (3)$$

where γ is a parameter that controls the support size of the basis function and h_a is a characteristic nodal spacing associated with node a .

On using the method of Lagrange multipliers, the solution to Problem 1 is given by [30]

$$\phi_a(\mathbf{x}, \boldsymbol{\lambda}) = \frac{Z_a(\mathbf{x}, \boldsymbol{\lambda}(\mathbf{x}))}{\sum_b Z_b(\mathbf{x}, \boldsymbol{\lambda}(\mathbf{x}))}, \quad Z_a = w_a(\mathbf{x}) \exp(-\boldsymbol{\lambda}(\mathbf{x}) \cdot \mathbf{c}_a(\mathbf{x})), \quad (4)$$

where the Lagrange multiplier vector $\boldsymbol{\lambda}(\mathbf{x})$ is obtained as the minimizer of the following dual optimization problem (\mathbf{x} is fixed):

Problem 2.

$$\boldsymbol{\lambda}^*(\mathbf{x}) = \arg \min_{\boldsymbol{\lambda} \in \mathbb{R}^d} \ln Z(\mathbf{x}, \boldsymbol{\lambda}).$$

Problem 2 leads to a system of two nonlinear equations given by

$$\mathbf{f}(\boldsymbol{\lambda}) = \nabla_{\boldsymbol{\lambda}} \ln Z(\boldsymbol{\lambda}) = - \sum_a^n \phi_a(\mathbf{x}) \tilde{\mathbf{x}}_a = \mathbf{0}, \quad (5)$$

where $\nabla_{\boldsymbol{\lambda}}$ stands for the gradient with respect to $\boldsymbol{\lambda}$. Once the converged solution for the Lagrange multiplier vector $\boldsymbol{\lambda}^*$ is found through (5), the basis functions $\phi_a(\mathbf{x})$ are obtained by setting $\boldsymbol{\lambda} = \boldsymbol{\lambda}^*$ in (4).

Finally, the gradient of the basis function is [31]:

$$\nabla \phi_a(\mathbf{x}) = \phi_a(\mathbf{x}, \boldsymbol{\lambda}^*) (\mathbf{J}(\mathbf{x}, \boldsymbol{\lambda}^*))^{-1} \mathbf{c}_a(\mathbf{x}), \quad (6)$$

where

$$\mathbf{J}(\mathbf{x}, \boldsymbol{\lambda}) = \sum_{a=1}^m \phi_a(\mathbf{x}, \boldsymbol{\lambda}) \mathbf{c}_a(\mathbf{x}) \otimes \mathbf{c}_a(\mathbf{x}) - \mathbf{r}(\mathbf{x}, \boldsymbol{\lambda}) \otimes \mathbf{r}(\mathbf{x}, \boldsymbol{\lambda}), \quad \mathbf{r}(\mathbf{x}, \boldsymbol{\lambda}) = - \sum_{a=1}^m \phi_a(\mathbf{x}, \boldsymbol{\lambda}) \mathbf{c}_a(\mathbf{x}). \quad (7)$$

4. Governing equations for the three-field formulation

The method that is proposed in the next section relies on the classical three-field Reissner-Mindlin plate problem formulation. It is instructive to review this formulation as many of its aspect are preserved in the new method. Therefore, in this section we provide a summary of the classical three-field formulation for the Reissner-Mindlin plate model and its discretization procedure using the maxent basis functions.

4.1. Strong form

Consider the midplane of an elastic plate of uniform thickness t that occupies the open domain $\Omega \subset \mathbb{R}^2$ and is bounded by the one-dimensional surface Γ . The coordinates of a point in this domain is denoted by $\mathbf{x} = (x, y)$. The rotations of fibers normal to the midplane, the transverse displacement of the midplane, and the scaled transverse shear stresses are denoted by $\mathbf{r}(\mathbf{x}) = (r_x, r_y)$, $w(\mathbf{x})$, and $\mathbf{s}(\mathbf{x}) = (s_x, s_y)$, respectively. A transverse load $q(\mathbf{x}) \in L^2(\Omega)$ is also acting on the plate. A schematic representation of the plate is depicted in Fig. 1.

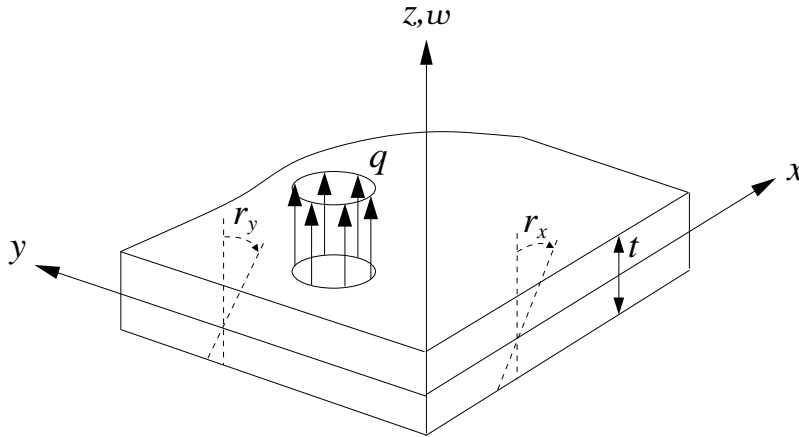


Fig. 1: Schematic representation of the plate.

The boundary of the plate is assumed to be entirely subjected to the essential (Dirichlet) boundary conditions $\hat{\mathbf{r}}(\mathbf{x}) : \Gamma_D \rightarrow \mathbb{R}^2$ and $\hat{w}(\mathbf{x}) : \Gamma_D \rightarrow \mathbb{R}$, which implies that $\Gamma = \Gamma_D$.

The boundary-value problem for this Reissner-Mindlin plate configuration reads [32]:

Problem 3. Find $\mathbf{r}(\mathbf{x}) : \Omega \rightarrow \mathbb{R}^2$, $w(\mathbf{x}) : \Omega \rightarrow \mathbb{R}$ and $\mathbf{s}(\mathbf{x}) : \Omega \rightarrow \mathbb{R}^2$ such that

$$\begin{aligned} -\nabla \cdot (\mathbf{C}\boldsymbol{\varepsilon}(\mathbf{r})) - \mathbf{s} &= \mathbf{0} \quad \forall \mathbf{x} \in \Omega, \\ -\nabla \cdot \mathbf{s} - q &= 0 \quad \forall \mathbf{x} \in \Omega, \\ (\nabla w - \mathbf{r}) - \frac{1}{\lambda t^{-2}} \mathbf{s} &= \mathbf{0} \quad \forall \mathbf{x} \in \Omega, \\ \mathbf{r} &= \hat{\mathbf{r}}, \quad w = \hat{w} \quad \forall \mathbf{x} \in \Gamma_D. \end{aligned}$$

In Problem 3, $\boldsymbol{\varepsilon}(\mathbf{r}) = \frac{1}{2} (\nabla \mathbf{r} + (\nabla \mathbf{r})^\top)$ is the strain tensor, $\mathbf{C} = \frac{E_Y}{12(1-\nu^2)} ((1-\nu)\boldsymbol{\varepsilon} + \nu \text{tr}(\boldsymbol{\varepsilon})\mathbf{I})$ is the tensor of bending moduli, and $\lambda = \kappa \frac{E_Y}{2(1+\nu)}$, where $\kappa = 5/6$ is the shear correction factor; E_Y and ν are the Young's modulus and the Poisson's ratio of the plate material, respectively.

4.2. Three-field mixed weak form

Let the spaces

$$\begin{aligned} R &:= \{ \mathbf{r} : \mathbf{r} \in [H^1(\Omega)]^2, \mathbf{r} = \hat{\mathbf{r}} \text{ on } \Gamma_D \} \\ R_0 &:= \{ \delta \mathbf{r} : \delta \mathbf{r} \in [H^1(\Omega)]^2, \delta \mathbf{r} = \mathbf{0} \text{ on } \Gamma_D \} \end{aligned}$$

be the trial and virtual spaces for the rotation field, respectively,

$$\begin{aligned} W &:= \{ w : w \in H^1(\Omega), w = \hat{w} \text{ on } \Gamma_D \} \\ W_0 &:= \{ \delta w : \delta w \in H^1(\Omega), \delta w = 0 \text{ on } \Gamma_D \} \end{aligned}$$

be the trial and virtual spaces for the transverse displacement field, respectively, and

$$S := \{ \mathbf{z} : \mathbf{z} \in [L^2(\Omega)]^2 \}$$

be the space for the trial and virtual scaled transverse shear stresses.

On using the preceding space definitions, the three-field mixed weak form reads [32, 33]:

Problem 4. Find $(\mathbf{r}, w, \mathbf{s}) \in R \times W \times S$ such that

$$\begin{aligned} \int_{\Omega} (\boldsymbol{\varepsilon}(\delta \mathbf{r}))^\top \mathbf{C} \boldsymbol{\varepsilon}(\mathbf{r}) \, d\mathbf{x} - \int_{\Omega} \mathbf{s} \cdot \delta \mathbf{r} \, d\mathbf{x} &= 0 \quad \forall \delta \mathbf{r} \in R_0, \\ \int_{\Omega} \mathbf{s} \cdot \nabla \delta w \, d\mathbf{x} - \int_{\Omega} q \delta w \, d\mathbf{x} &= 0 \quad \forall \delta w \in W_0, \\ \int_{\Omega} \left((\nabla w - \mathbf{r}) - \frac{\mathbf{s}}{\lambda t^{-2}} \right) \cdot \delta \mathbf{s} \, d\mathbf{x} &= 0 \quad \forall \delta \mathbf{s} \in S. \end{aligned}$$

In Problem 4, $\boldsymbol{\varepsilon}(\mathbf{r}) = [\varepsilon_{xx} \ \varepsilon_{yy} \ 2\varepsilon_{xy}]^\top$ is the strain tensor in Voigt notation, and \mathbf{C} is the Voigt representation of the tensor of bending moduli and is given by

$$\mathbf{C} = \frac{E_Y}{12(1-\nu^2)} \begin{bmatrix} 1 & \nu & 0 \\ \nu & 1 & 0 \\ 0 & 0 & \frac{1-\nu}{2} \end{bmatrix}. \quad (11)$$

4.3. Discrete equations using maxent basis functions

The discrete version of Problem 4 is obtained by approximating the field variables using the maxent basis functions over a set of scattered nodes that discretely represent the continuous plate. Due to the nonpolynomial nature of the maxent basis functions, the weak form integrals cannot be computed exactly. Thus, numerical quadrature is used to evaluate them. For this purpose, we construct a finite element mesh whose elements are used to define integration points and its nodes to discretize the field variables. The whole procedure can be thought as a finite element method with basis functions having a radial support. The support is controlled by the maxent parameters and its size is typically larger than the support of a finite element basis function. The construction of maxent basis functions depends only on the nodal coordinates (see Section 3) for which they are regarded as “meshfree.” An advantage of using meshfree basis functions is that since the element is not involved in the computation of them, the resulting method is less sensitive to mesh distortion than the finite element method.

For the construction of the integration mesh, we follow the standard practice in finite elements. That is, we consider a mesh of so-called mixed finite elements that would produce convergent and stable finite element solutions for the three-field mixed weak form that models the Reissner-Mindlin plate problem. Several mixed finite elements are available in the finite element literature (see for instance Ref. [34]). In this paper, we construct the integration mesh inspired by the recent work of Song and Niu [29], as follows: let the domain be partitioned into disjoint nonoverlapping three-node triangular cells. We denote an integration cell as E . The partition formed by these cells is denoted as \mathcal{T}^h , where h is the maximum cell diameter among the cells in the partition. The standard set of nodes, denoted by \mathcal{N}^s , is formed by the vertices of the triangular mesh. In addition to the standard node set, we define a barycenter node set as \mathcal{N}^b with nodes located at the barycenter of each cell. So, the enhanced node set is defined as $\mathcal{N}^+ = \mathcal{N}^s \cup \mathcal{N}^b$. The degrees of freedom associated with this partition is summarized as follows:

- each node in the standard node set carries two rotations, one transverse displacement, and two transverse shear stresses.
- each node in the barycenter node set carries two rotations.

Fig. 2 presents a schematic representation of the integration mesh.

The partition \mathcal{T}^h is constructed using a triangular mesh generator and the location of quadrature points are computed based on this partition. The enhanced node set \mathcal{N}^+ is constructed when needed by adding the barycenter node set \mathcal{N}^b to the standard node set \mathcal{N}^s . This poses no problem or additional complexity in the method since the absence of the finite element structure in the computation of meshfree basis functions permits the addition of nodes to the mesh very easily.

In the process of evaluating the discrete weak form, maxent basis functions need to be computed at integration points. To make clear the implications of the numerical integration

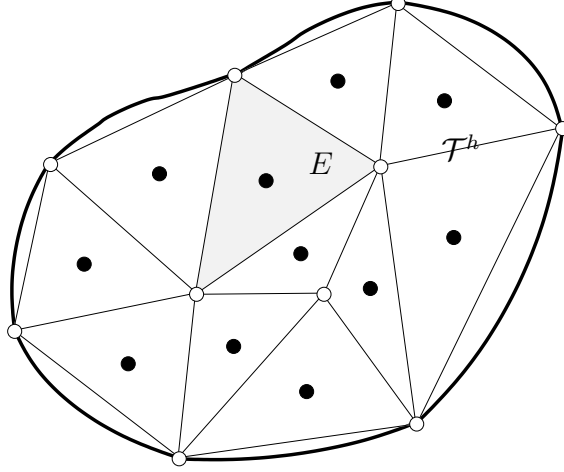


Fig. 2: Schematic representation of the domain partition into cells and nodes for the discretization of the three-field mixed weak form. The shaded triangle is a typical cell of the partition. The white circles represent the standard node set \mathcal{N}^s and the black ones the barycenter node set \mathcal{N}^b .

procedure using meshfree basis functions, the concept of nodal contribution is introduced as follows: the nodal contribution at a given integration point with coordinates \boldsymbol{x} is defined as the indices of the nodes whose basis functions have a nonzero value at \boldsymbol{x} . It should be noted that due to the radial support of the maxent basis functions, the evaluation of the them at an integration point is likely to have a nodal contribution stemming not only from the nodes that define the integration cell, but also from nodes located outside the integration cell. A graphical explanation of the nodal contribution at an integration point located in the interior of the cell and an integration point located on an edge of the cell is provided in Fig. 3, where the support of nodal basis functions are represented by circles centered at nodes. The circles drawn with continuous line and centered at filled nodes represent basis functions of nodes defining the integration cell and having a nonzero value at the integration point. Hence, the indices of filled nodes are part of the nodal contribution. The circles drawn with dashed line and centered at filled dashed nodes represent basis functions of nodes lying outside the integration cell and having a nonzero value at the integration point. Thus, the indices of filled dashed nodes are also part of the nodal contribution. The circles drawn with dotted line and centered at empty nodes represent nodal basis functions having a zero value at the integration point. The indices of empty nodes are then not part of the nodal contribution.

The nodal contribution concept is not restricted to the numerical integration procedure only, it is in general applicable to any evaluation of basis functions within Ω or on Γ .

On using the maxent basis functions, the discrete trial and virtual field variables are

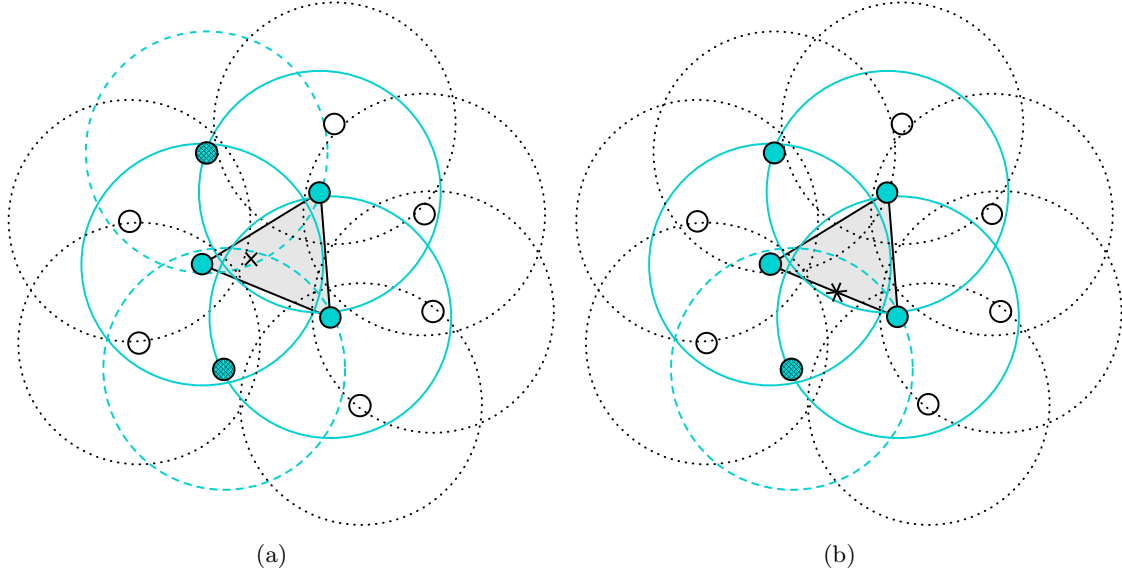


Fig. 3: Graphical explanation of the nodal contribution concept for the evaluation of nodal basis functions at (a) an integration point (depicted as \times) located in the interior of the cell and (b) an integration point (depicted as $*$) located on an edge of the cell. The support of nodal basis functions are represented by circles centered at nodes. The indices of the nodes whose basis functions have a nonzero value at the integration point (i.e., the indices of the nodes whose associated circles contain the integration point) define the nodal contribution. In this example, the nodal contribution contains the indices of the nodes that define the integration cell (filled nodes) and some nodes that lie outside the integration cell (filled dashed nodes).

obtained as follows:

$$\mathbf{r}^h(\mathbf{x}) = \sum_{a=1}^{nenh} \phi_a(\mathbf{x}) \mathbf{r}_a, \quad \delta \mathbf{r}^h(\mathbf{x}) = \sum_{b=1}^{nenh} \phi_b(\mathbf{x}) \delta \mathbf{r}_b, \quad (12a)$$

$$w^h(\mathbf{x}) = \sum_{a=1}^{nstd} \phi_a(\mathbf{x}) w_a, \quad \delta w^h(\mathbf{x}) = \sum_{b=1}^{nstd} \phi_b(\mathbf{x}) \delta w_b, \quad (12b)$$

$$\mathbf{s}^h(\mathbf{x}) = \sum_{a=1}^{nstd} \phi_a(\mathbf{x}) \mathbf{s}_a, \quad \delta \mathbf{s}^h(\mathbf{x}) = \sum_{b=1}^{nstd} \phi_b(\mathbf{x}) \delta \mathbf{s}_b, \quad (12c)$$

where $nenh$ and $nstd$ are the number of nodes that define the nodal contributions at \mathbf{x} in the enhanced node set (\mathcal{N}^+) and the standard node set (\mathcal{N}^s), respectively, and $\mathbf{r}_a = \mathbf{r}(\mathbf{x}_a)$, $w_a = w(\mathbf{x}_a)$ and $\mathbf{s}_a = \mathbf{s}(\mathbf{x}_a)$ are the unknown nodal coefficients.

Thus, the discrete three-field mixed weak form at the integration cell level reads:

Problem 5. Find $(\mathbf{r}^h, w^h, \mathbf{s}^h) \in (R^h \subset R) \times (W^h \subset W) \times (S^h \subset S)$ such that

$$\begin{aligned} \int_E (\boldsymbol{\varepsilon}^h(\delta \mathbf{r}^h))^\top \mathbf{C} \boldsymbol{\varepsilon}^h(\mathbf{r}^h) \, d\mathbf{x} - \int_E \mathbf{s}^h \cdot \delta \mathbf{r}^h \, d\mathbf{x} &= 0 \quad \forall \delta \mathbf{r}^h \in R_0^h \subset R_0, \\ \int_E \mathbf{s}^h \cdot \nabla \delta w^h \, d\mathbf{x} - \int_E q \delta w^h \, d\mathbf{x} &= 0 \quad \forall \delta w^h \in W_0^h \subset W_0, \\ \int_E \left((\nabla w^h - \mathbf{r}^h) - \frac{\mathbf{s}^h}{\lambda t^{-2}} \right) \cdot \delta \mathbf{s}^h \, d\mathbf{x} &= 0 \quad \forall \delta \mathbf{s}^h \in S_0^h \subset S_0. \end{aligned}$$

5. The volume-averaged nodal projection method

In analogy to the VANP method for nearly-incompressible elasticity [21], this method when applied to the Reissner-Mindlin plate model allows the elimination of the scaled shear stresses from the analysis, which leads to a method written in terms of the primitive variables \mathbf{r} and w . In this section, the VANP method for the Reissner-Mindlin plate model is formulated.

5.1. Projection operator

Consider the discrete two-field scaled variational formulation for the Reissner-Mindlin plate model [32, 35]:

Problem 6. The field variables $(\mathbf{r}^h, w^h) \in (R^h \subset R) \times (W^h \subset W)$ can be found as the unique minimum point of the following potential energy functional:

$$\Psi(\mathbf{r}^h, w^h) = \inf_{\mathbf{r}^h, w^h} \frac{1}{2} \int_E (\boldsymbol{\varepsilon}^h(\mathbf{r}^h))^\top \mathbf{C} \boldsymbol{\varepsilon}^h(\mathbf{r}^h) \, d\mathbf{x} + \frac{\lambda t^{-2}}{2} \int_E (\nabla w^h - \mathbf{r}^h)^\top (\nabla w^h - \mathbf{r}^h) \, d\mathbf{x} - \int_E q w^h \, d\mathbf{x}.$$

Problem 6 requires the minimizing pair \mathbf{r}^h, w^h to satisfy the Kirchhoff constraint $\nabla w^h - \mathbf{r}^h = \mathbf{0}$ as the thickness of the plate becomes very small, which at the element level is a severe condition that leads to shear-locking. This issue is purely numerical and manifests itself as the impossibility for a displacement-based formulation (i.e., a formulation in primitive variables \mathbf{r} and w) to undergo deformations as the thickness of the plate becomes too small.

As a remedy for shear-locking, the following modified version of Problem 6 is considered:

Problem 7. The field variables $(\mathbf{r}^h, w^h) \in (R^h \subset R) \times (W^h \subset W)$ can be found as the unique minimum point of the following modified potential energy functional:

$$\bar{\Psi}(\mathbf{r}^h, w^h) = \inf_{\mathbf{r}^h, w^h} \frac{1}{2} \int_E (\boldsymbol{\varepsilon}^h(\mathbf{r}^h))^\top \mathbf{C} \boldsymbol{\varepsilon}^h(\mathbf{r}^h) \, d\mathbf{x} + \frac{\lambda t^{-2}}{2} \int_E (\overline{\nabla w^h - \mathbf{r}^h})^\top (\overline{\nabla w^h - \mathbf{r}^h}) \, d\mathbf{x} - \int_E q w^h \, d\mathbf{x}.$$

The “bar” symbol in Problem 7 is intended to define a modified shear strain that alleviates shear-locking.

On taking the first variation of the modified potential energy functional in Problem 7, leads to the following discrete modified two-field weak form for the Reissner-Mindlin model:

Problem 8. Find $(\mathbf{r}^h, w^h) \in (R^h \subset R) \times (W^h \subset W)$ such that

$$\begin{aligned} & \lambda t^{-2} \int_E (\overline{\nabla \delta w^h})^\top \overline{\nabla w^h} \, d\mathbf{x} - \lambda t^{-2} \int_E (\overline{\nabla \delta w^h})^\top \overline{\mathbf{r}^h} \, d\mathbf{x} - \int_E \delta w^h q \, d\mathbf{x} = 0 \\ & \forall \delta w^h \in W_0^h \subset W_0, \\ & - \lambda t^{-2} \int_E (\overline{\delta \mathbf{r}^h})^\top \overline{\nabla w^h} \, d\mathbf{x} + \int_E (\varepsilon^h(\delta \mathbf{r}^h))^\top \mathbf{C} \varepsilon^h(\mathbf{r}^h) \, d\mathbf{x} + \lambda t^{-2} \int_E (\overline{\delta \mathbf{r}^h})^\top \overline{\mathbf{r}^h} \, d\mathbf{x} = 0 \\ & \forall \delta \mathbf{r}^h \in R_0^h \subset R_0. \end{aligned}$$

In contrast to the system that gives form to the local patch projection method [18], Problem 8 is a symmetric system. This is a consequence of the modified shear strain being applied to the potential energy functional.

In order to develop the stiffness matrix from Problem 8, an appropriate construction for the “barred” quantities that appear therein is needed — here “appropriate” means that shear-locking is precluded. An effective procedure to achieve this aim is offered by the Kirchhoff constraint given in the last equality of Problem 5. The procedure consists in rearranging the Kirchhoff constraint such that \mathbf{s}^h can be computed in terms of the primitive variables, as follows:

$$\mathbf{s}^h = \lambda t^{-2} \pi^h \left[\nabla w^h - \mathbf{r}^h \right] = \lambda t^{-2} \left(\pi^h \left[\nabla w^h \right] - \pi^h \left[\mathbf{r}^h \right] \right), \quad (15)$$

where π^h is a projection operator that adopts the form of an L^2 projection. By comparing the second equation in Problem 8 with (15), the following equalities are proposed:

$$\overline{\nabla w^h} = \pi^h \left[\nabla w^h \right], \quad \overline{\mathbf{r}^h} = \pi^h \left[\mathbf{r}^h \right], \quad (16)$$

which give the definition of the “bar” operator as $\overline{(\cdot)} := \pi^h[\cdot]$.

We are left with the explicit expression for the projection operator. It is derived as follows: the discrete scaled transverse shear stresses given in (12c) are replaced into the last equation in Problem 5 (the Kirchhoff constraint), which after relying on the arbitrariness of nodal variations yields in nodal form

$$\int_E \phi_c(\mathbf{x}) \left[\nabla w^h - \mathbf{r}^h \right] \, d\mathbf{x} - \frac{1}{\lambda t^{-2}} \int_E \phi_c(\mathbf{x}) \phi_b(\mathbf{x}) \mathbf{s}_b \, d\mathbf{x} = 0. \quad (17)$$

The integral that accompanies the nodal transverse shear stress on the left-hand side of (17) defines a matrix \mathbf{H} whose entries are given by

$$\mathbf{H}_{cb} = \int_E \phi_c(\mathbf{x}) \phi_b(\mathbf{x}) \, d\mathbf{x}. \quad (18)$$

Eq. (17) can be solved for the nodal scaled transverse shear stress as follows:

$$\mathbf{s}_b = \lambda t^{-2} \mathbf{H}_{cb}^{-1} \int_E \phi_c(\mathbf{x}) \left[\nabla w^h - \mathbf{r}^h \right] \, d\mathbf{x}, \quad (19)$$

where \mathbf{H}_{cb}^{-1} is read as the nodal component of the inverse of the matrix \mathbf{H} . Since the maxent basis functions are positive functions, all the entries in the matrix \mathbf{H} are nonnegative. Hence, Eq. (19) can be safely simplified by performing row-sum on \mathbf{H} (i.e., by lumping) leading to the following *volume-averaged nodal scaled transverse shear stress* vector:

$$\mathbf{s}_c = \lambda t^{-2} \frac{\int_{E_c} \phi_c(\mathbf{x}) \left[\nabla w^h - \mathbf{r}^h \right] \, d\mathbf{x}}{\int_{E_c} \phi_c(\mathbf{x}) \, d\mathbf{x}}, \quad (20)$$

which is used to project the scaled transverse shear stress field, as follows:

$$\mathbf{s}^h = \sum_{c=1}^{nstd} \phi_c(\mathbf{x}) \mathbf{s}_c = \lambda t^{-2} \sum_{c=1}^{nstd} \phi_c(\mathbf{x}) \left\{ \frac{\int_{E_c} \phi_c(\mathbf{x}) \left[\nabla w^h - \mathbf{r}^h \right] \, d\mathbf{x}}{\int_{E_c} \phi_c(\mathbf{x}) \, d\mathbf{x}} \right\}. \quad (21)$$

The projection operator that defines the “bar” operator is realized by comparing (15) with (21) and is given by

$$\overline{(\cdot)} = \pi^h[\cdot] = \sum_{c=1}^{nstd} \phi_c(\mathbf{x}) \pi_c[\cdot], \quad (22)$$

where $\pi_c[\cdot]$ is the *volume-averaged nodal projection* (VANP) operator given by

$$\pi_c[\cdot] = \frac{\int_{E_c} \phi_c(\mathbf{x}) [\cdot] \, d\mathbf{x}}{\int_{E_c} \phi_c(\mathbf{x}) \, d\mathbf{x}}. \quad (23)$$

In (23), E_c is a representative nodal volume defined as the union of all the elements attached to node c . Fig. 4(a) depicts the nodal volume E_c when the standard node set \mathcal{N}^s is used, and Fig. 4(b) when the enhanced node set \mathcal{N}^+ is used.

The following precautions must be taken into account when computing the VANP operator:

- It should be noted that since $\phi_c(\mathbf{x})$ in (23) stems from the nodal shear stresses variations its evaluation must always be performed in \mathcal{N}^s , which requires E_c to be defined as in Fig. 4(a).

- Observing the “barred” terms in Problem 8, it must be realized that between the square brackets in the VANP operator we will have either \mathbf{r}^h or ∇w^h . The computation of the former requires the enhanced node set and thus E_c must be defined as in Fig. 4(b), and the computation of the latter requires the standard node set and thus E_c must be defined as in Fig. 4(a).
- The evaluation of the VANP operator requires numerical integration at quadrature points and thus the nodal contribution concept (see Fig. 3 to recall this concept) must also be considered.

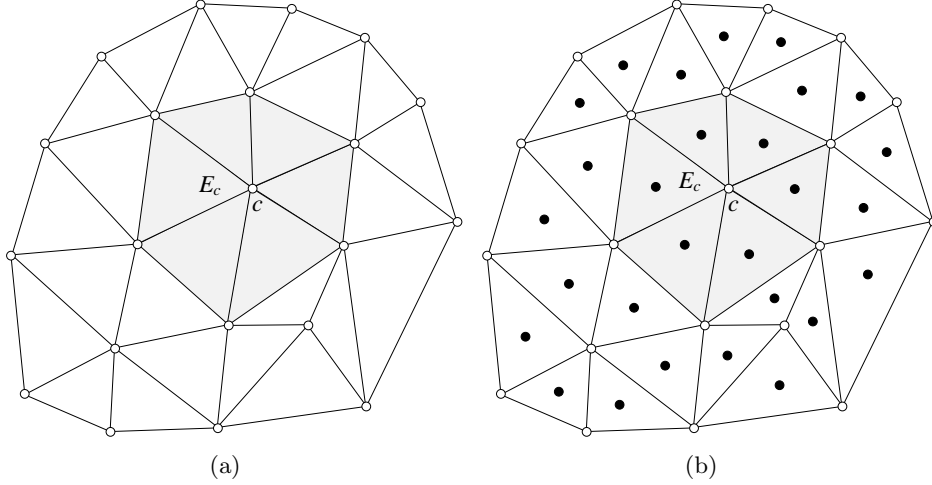


Fig. 4: Definition of the representative nodal volume E_c (shaded area) for the evaluation of the integrals that appear in the volume-averaged nodal projection operator. (a) nodal volume based on the standard node set \mathcal{N}^s , and (b) nodal volume based on the enhanced node set \mathcal{N}^+ .

5.2. Stiffness matrix and nodal force vector

The stiffness matrix and nodal force vector are developed by discretizing Problem 8 with the rotation and transverse displacement fields approximations given in (12a) and (12b), respectively. On using these approximations, we write

$$\boldsymbol{\varepsilon}^h(\mathbf{r}^h) = \sum_{a=1}^{nenh} \mathbf{B}_a(\mathbf{x}) \mathbf{r}_a, \quad \boldsymbol{\varepsilon}^h(\delta \mathbf{r}^h) = \sum_{b=1}^{nenh} \mathbf{B}_b(\mathbf{x}) \delta \mathbf{r}_b, \quad \mathbf{B}_a(\mathbf{x}) = \begin{bmatrix} \phi_{a,x} & 0 \\ 0 & \phi_{a,y} \\ \phi_{a,y} & \phi_{a,x} \end{bmatrix}, \quad (24)$$

and

$$\nabla w^h = \sum_{a=1}^{nstd} \mathbf{G}_a(\mathbf{x}) w_a, \quad \nabla \delta w^h = \sum_{b=1}^{nstd} \mathbf{G}_b(\mathbf{x}) \delta w_b, \quad \mathbf{G}_a(\mathbf{x}) = \begin{bmatrix} \phi_{a,x} \\ \phi_{a,y} \end{bmatrix}. \quad (25)$$

In addition, the discrete rotation field is conveniently rewritten as

$$\mathbf{r}^h = \sum_{a=1}^{ nenh } \mathbf{N}_a(\mathbf{x}) \mathbf{r}_a, \quad \delta \mathbf{r}^h = \sum_{b=1}^{ nenh } \mathbf{N}_b(\mathbf{x}) \delta \mathbf{r}_b, \quad \mathbf{N}_a(\mathbf{x}) = \begin{bmatrix} \phi_a & 0 \\ 0 & \phi_a \end{bmatrix}. \quad (26)$$

And on using (22), (25) and (26), the following projected terms are obtained:

$$\overline{\nabla w^h} = \sum_{a=1}^{ nstd } \left\{ \sum_{c=1}^{ nstd } \phi_c(\mathbf{x}) \pi_c [\mathbf{G}_a(\mathbf{x})] \right\} w_a, \quad \overline{\nabla \delta w^h} = \sum_{b=1}^{ nstd } \left\{ \sum_{c=1}^{ nstd } \phi_c(\mathbf{x}) \pi_c [\mathbf{G}_b(\mathbf{x})] \right\} \delta w_b, \quad (27)$$

and

$$\overline{\mathbf{r}^h} = \sum_{a=1}^{ nenh } \left\{ \sum_{c=1}^{ nstd } \phi_c(\mathbf{x}) \pi_c [\mathbf{N}_a(\mathbf{x})] \right\} \mathbf{r}_a, \quad \overline{\delta \mathbf{r}^h} = \sum_{b=1}^{ nenh } \left\{ \sum_{c=1}^{ nstd } \phi_c(\mathbf{x}) \pi_c [\mathbf{N}_b(\mathbf{x})] \right\} \delta \mathbf{r}_b. \quad (28)$$

Finally, by collecting all the discrete quantities and replacing them into the modified two-field weak form (Problem 8), and appealing to the arbitrariness of nodal variations, the following global system of equations is obtained after assembling the local contributions:

$$\begin{bmatrix} \mathbf{K}_{ww} & -\mathbf{K}_{wr} \\ -\mathbf{K}_{wr}^T & \mathbf{K}_{ee} + \mathbf{K}_{rr} \end{bmatrix} \begin{bmatrix} \mathbf{w} \\ \mathbf{r} \end{bmatrix} = \begin{bmatrix} \mathbf{f}_w \\ \mathbf{0} \end{bmatrix}, \quad (29a)$$

where \mathbf{w} and \mathbf{r} are the global column vectors of nodal coefficients for the transverse displacement and rotations, respectively; \mathbf{K}_{ww} , \mathbf{K}_{wr} , \mathbf{K}_{ee} and \mathbf{K}_{rr} are the assembled stiffness matrices, and \mathbf{f}_w is the assembled nodal force vector.

On defining the assembly operator as \mathbf{A} , the assembled stiffness matrices for the partition of the domain into nel integration cells are obtained as

$$\mathbf{K}_{ww} = \mathbf{A} \mathbf{K}_{ww}^E, \quad \mathbf{K}_{wr} = \mathbf{A} \mathbf{K}_{wr}^E, \quad \mathbf{K}_{ee} = \mathbf{A} \mathbf{K}_{ee}^E, \quad \mathbf{K}_{rr} = \mathbf{A} \mathbf{K}_{rr}^E, \quad \mathbf{f}_w = \mathbf{A} \mathbf{f}_w^E, \quad (29b)$$

where the local stiffness matrices evaluated on the integration cell E are

$$\mathbf{K}_{ww}^E = \sum_{a=1}^{ nstd } \sum_{b=1}^{ nstd } \left(\lambda t^{-2} \int_E \left(\sum_{c=1}^{ nstd } \phi_c(\mathbf{x}) \pi_c [\mathbf{G}_a(\mathbf{x})] \right) \sum_{c=1}^{ nstd } \phi_c(\mathbf{x}) \pi_c [\mathbf{G}_b(\mathbf{x})] d\mathbf{x} \right), \quad (29c)$$

$$\mathbf{K}_{wr}^E = \sum_{a=1}^{ nstd } \sum_{b=1}^{ nenh } \left(\lambda t^{-2} \int_E \left(\sum_{c=1}^{ nstd } \phi_c(\mathbf{x}) \pi_c [\mathbf{G}_a(\mathbf{x})] \right) \sum_{c=1}^{ nstd } \phi_c(\mathbf{x}) \pi_c [\mathbf{N}_b(\mathbf{x})] d\mathbf{x} \right), \quad (29d)$$

$$\mathbf{K}_{ee}^E = \sum_{a=1}^{ nenh } \sum_{b=1}^{ nenh } \left(\int_E \mathbf{B}_a^T(\mathbf{x}) \mathbf{C} \mathbf{B}_b(\mathbf{x}) d\mathbf{x} \right), \quad (29e)$$

$$\mathbf{K}_{rr}^E = \sum_{a=1}^{ nenh } \sum_{b=1}^{ nenh } \left(\lambda t^{-2} \int_E \left(\sum_{c=1}^{ nstd } \phi_c(\mathbf{x}) \pi_c [\mathbf{N}_a(\mathbf{x})] \right) \sum_{c=1}^{ nstd } \phi_c(\mathbf{x}) \pi_c [\mathbf{N}_b(\mathbf{x})] d\mathbf{x} \right), \quad (29f)$$

and the nodal force vector is

$$\mathbf{f}_w^E = \sum_{a=1}^{nstd} \left(\int_E \phi_a(\mathbf{x}) q(\mathbf{x}) d\mathbf{x} \right). \quad (29g)$$

It is recalled that in the implementation of these stiffness matrices and nodal force vector, $nstd$ and $nenh$ are the number of nodes that define the nodal contributions in the standard node set (\mathcal{N}^s) and the enhanced node set (\mathcal{N}^+), respectively, that result from the numerical integration process. The numerical integration of the nodal force vector is done using standard Gauss integration on triangles, but the numerical integration of the stiffness matrices requires a special treatment which is elaborated in the next subsection.

5.3. Numerical integration

The cell-based integration of the stiffness matrices that depend on basis functions derivatives (i.e., Eqs. (29c)-(29e)) introduces integration errors when standard Gauss integration is used, which results in convergence issues and the patch test is not satisfied. To alleviate these integration errors in the VAMP method, a smoothing procedure known as quadratically consistent 3-point integration scheme [28] is performed to correct the values of the basis functions derivatives at the integration points. This smoothing procedure was already used in the linear [21] and nonlinear [36] VAMP formulations for nearly-incompressible solids. In this paper, we follow the same approach.

A representative integration cell E along with its integration points is depicted in Fig. 5(a) when the standard node set (\mathcal{N}^s) is used and in Fig. 5(b) when the enhanced node set (\mathcal{N}^+) is used. Basically, the situation shown in Fig. 5(a) is used to evaluate the derivatives appearing in (29c) and (29d) through the nodal matrix \mathbf{G}_a and the situation depicted in Fig. 5(b) to evaluate the derivatives appearing in (29e) through the nodal matrix \mathbf{B}_a .

A summary of the basis functions derivatives correction procedure follows. The Cartesian coordinate system is chosen, where for convenience $x \equiv x_1$ and $y \equiv x_2$. In addition, n_j ($j = 1, 2$) is the j -th component of the unit outward normal to a cell edge in the Cartesian coordinate system. The integration accuracy of the smoothing procedure is of second-order, which is obtained by requiring the basis functions derivatives to satisfy the divergence constraint

$$\int_E \phi_{a,j} f(\mathbf{x}) d\mathbf{x} = \int_{\partial E} \phi_a f(\mathbf{x}) n_j ds - \int_E \phi_a f_{,j}(\mathbf{x}) d\mathbf{x}, \quad (30)$$

where $f(\mathbf{x})$ is the first-order polynomial base

$$f(\mathbf{x}) = [1 \ x_1 \ x_2]^\top, \quad (31)$$

whose derivative (δ_{ij} is the Kronecker delta symbol) is

$$f_{,j}(\mathbf{x}) = [0 \ \delta_{1j} \ \delta_{2j}]^\top. \quad (32)$$

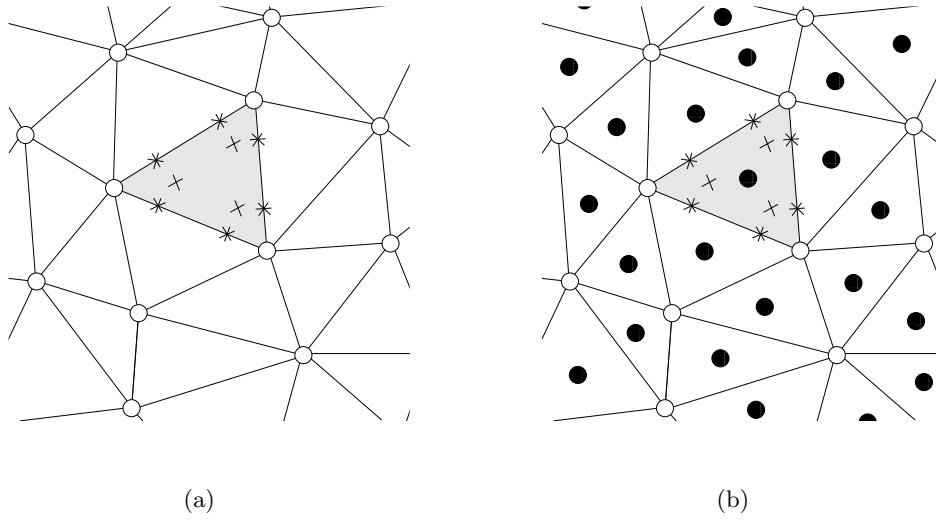


Fig. 5: Schematic representation of integration cells and their integration points for correction of basis functions derivatives in the VANP approach. The shaded region is the integration cell E . The symbol \times represents integration points located in the interior of the integration cell and the symbol $*$ represents integration points located on the cell boundary. (a) Integration cell when the standard node set (\mathcal{N}^s) is used and (b) integration cell when the enhanced node set (\mathcal{N}^+) is used.

The expanded version of (30) is:

$$\int_E \phi_{a,1} \, d\mathbf{x} = \int_{\partial E} \phi_a n_1 \, ds, \quad (33a)$$

$$\int_E \phi_{a,1} x_1 \, d\mathbf{x} = \int_{\partial E} \phi_a x_1 n_1 \, ds - \int_E \phi_a \, d\mathbf{x}, \quad (33b)$$

$$\int_E \phi_{a,1} x_2 \, d\mathbf{x} = \int_{\partial E} \phi_a x_2 n_1 \, ds, \quad (33c)$$

for $\phi_{a,1}$, and

$$\int_E \phi_{a,2} \, d\mathbf{x} = \int_{\partial E} \phi_a n_2 \, ds, \quad (33d)$$

$$\int_E \phi_{a,2} x_1 \, d\mathbf{x} = \int_{\partial E} \phi_a x_1 n_2 \, ds, \quad (33e)$$

$$\int_E \phi_{a,2} x_2 \, d\mathbf{x} = \int_{\partial E} \phi_a x_2 n_2 \, ds - \int_E \phi_a \, d\mathbf{x} \quad (33f)$$

for $\phi_{a,2}$.

The integration constraints (33) are solved using Gauss integration on the integration cell E shown in Fig. 5. Consider the following notations:

- ${}^h \mathbf{p} = ({}^h p_1, {}^h p_2)$ as the Cartesian coordinates of the h -th interior integration point with an associated Gauss weight ${}^h w$.
- ${}^g \mathbf{e} = ({}^g e_1, {}^g e_2)$ as the Cartesian coordinates of the g -th integration point that is located on the k -th edge of the cell with an associated Gauss weight ${}^g v$.
- ${}_k \mathbf{n} = ({}_k n_1, {}_k n_2)$ as the unit outward normal to the k -th edge of the cell.

On using the preceding notations, the discrete version of the integration constraints (33) is:

$$\mathbf{W} d_j = \mathbf{f}_j, \quad j = 1, 2 \quad (34a)$$

where

$$\mathbf{W} = \begin{bmatrix} {}^1 w & {}^2 w & {}^3 w \\ {}^1 w {}^1 p_1 & {}^2 w {}^2 p_1 & {}^3 w {}^3 p_1 \\ {}^1 w {}^1 p_2 & {}^2 w {}^2 p_2 & {}^3 w {}^3 p_2 \end{bmatrix}, \quad (34b)$$

$$\mathbf{f}_1 = \begin{bmatrix} \sum_{k=1}^3 \sum_{g=1}^2 \phi_a ({}^g \mathbf{e})_k n_1 {}^g v \\ \sum_{k=1}^3 \sum_{g=1}^2 \phi_a ({}^g \mathbf{e})_k e_1 {}_k n_1 {}^g v - \sum_{h=1}^3 \phi_a ({}^h \mathbf{p}) {}^h w \\ \sum_{k=1}^3 \sum_{g=1}^2 \phi_a ({}^g \mathbf{e})_k e_2 {}_k n_1 {}^g v \end{bmatrix}, \quad (34c)$$

$$\mathbf{f}_2 = \begin{bmatrix} \sum_{k=1}^3 \sum_{g=1}^2 \phi_a({}^g \mathbf{e}_k) {}_k n_2 {}^g v \\ \sum_{k=1}^3 \sum_{g=1}^2 \phi_a({}^g \mathbf{e}_k) {}^g e_1 {}_k n_2 {}^g v \\ \sum_{k=1}^3 \sum_{g=1}^2 \phi_a({}^g \mathbf{e}_k) {}^g e_2 {}_k n_2 {}^g v - \sum_{h=1}^3 \phi_a({}^h \mathbf{p}) {}^h w \end{bmatrix}, \quad (34d)$$

and the solution vector of the j -th basis function derivative evaluated at the three interior integration points is

$$\mathbf{d}_j = [\phi_{a,j}({}^1 \mathbf{p}) \quad \phi_{a,j}({}^2 \mathbf{p}) \quad \phi_{a,j}({}^3 \mathbf{p})]^\top. \quad (34e)$$

In the foregoing equations, index a runs through the nodes that define the nodal contribution either in \mathcal{N}^s or \mathcal{N}^+ .

Finally, the numerical integration of the stiffness matrices is performed using 3-point Gauss rule on the triangular cells, but the basis functions derivatives at these three integration points are replaced by the corrected derivatives given in (34e).

6. Numerical experiments

In this section, several numerical experiments are performed to assess the accuracy of the proposed VANP formulation for the Reissner-Mindlin plate model. Unless stated otherwise, the default numerical integration procedure for the VANP formulation is the quadratically consistent 3-point integration scheme (QC3). For assessing Reissner-Mindlin plate problems with known global solution, we use the relative L^2 -norm of error and the relative H^1 -seminorm of the error, which are defined, respectively, as follows:

$$\frac{\|\mathbf{u} - \mathbf{u}^h\|_{L^2(\Omega)}}{\|\mathbf{u}\|_{L^2(\Omega)}} = \sqrt{\frac{\sum_E \int_E (\mathbf{u} - \mathbf{u}^h)^\top (\mathbf{u} - \mathbf{u}^h) \, d\mathbf{x}}{\sum_E \int_E \mathbf{u}^\top \mathbf{u} \, d\mathbf{x}}},$$

$$\frac{\|\mathbf{u} - \mathbf{u}^h\|_{H^1(\Omega)}}{\|\mathbf{u}\|_{H^1(\Omega)}} = \sqrt{\frac{\sum_E \int_E (\mathbf{u}' - \mathbf{u}'^h)^\top (\mathbf{u}' - \mathbf{u}'^h) \, d\mathbf{x}}{\sum_E \int_E \mathbf{u}'^\top \mathbf{u}' \, d\mathbf{x}}},$$

where $\mathbf{u} = [w \ r_x \ r_y]^\top$ and $\mathbf{u}' = [w_{,x} \ w_{,y} \ r_{x,x} \ r_{x,y} \ r_{y,x} \ r_{y,y}]^\top$ are the exact solutions, and \mathbf{u}^h and \mathbf{u}'^h are their corresponding approximations.

In addition, on using the exact nodal scaled transverse shear stress solution \mathbf{s}_a and its approximation \mathbf{s}_a^h , the following relative L^2 -norm of the nodal error is defined to assess the convergence of the VANP method in the scaled transverse shear stress variable:

$$\frac{\|\mathbf{s} - \mathbf{s}^h\|_{L^2(\Omega)}}{\|\mathbf{s}\|_{L^2(\Omega)}} = \sqrt{\frac{\sum_a (\mathbf{s}_a - \mathbf{s}_a^h)^\top (\mathbf{s}_a - \mathbf{s}_a^h)}{\sum_a \mathbf{s}_a^\top \mathbf{s}_a}},$$

since in the VANP approach the scaled transverse shear stress is a nodal quantity that can be computed *a posteriori* from the primitive variables using (20).

6.1. Zero shear deformation patch test

We start by performing a patch test to evaluate whether our VANP formulation, which uses linear approximations, can reproduce a linear solution within machine precision. We also want to check that our method is devoid of the shear-locking phenomenon when the transverse shear deformation approaches zero. For the Reissner-Mindlin problem, the condition of zero shear deformation requires that the transverse displacement w is one order higher than the order of the rotations \mathbf{r} . To obtain an exact linear solution for w and be able to test our method, we use the zero shear deformation patch test that is provided in Ref. [37]. The lowest order solution given therein is quadratic in w and linear in \mathbf{r} . To obtain a linear solution in w , the exact solution provided in Ref. [37] is managed by appropriately choosing the arbitrary constants so that the following particular exact solution is obtained:

$$w = 1 + x + y, \quad r_x = 1, \quad r_y = 1.$$

The linear patch test is built by imposing the above exact solution along the entire boundary of a unit square domain. Three integration meshes are used as shown in Fig. 6. The elastic parameters for the material of the plate are set to $E_Y = 10.92 \times 10^6$ psi and

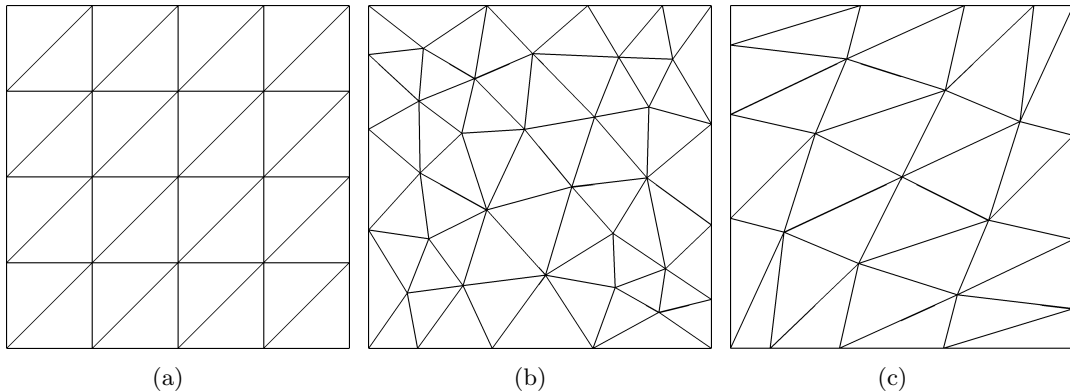


Fig. 6: Integration meshes for the zero shear deformation patch test.

$\nu = 0.3$. The side of the plate L , which in this case is the unit, is taken as the characteristic length for defining the normalized thickness of the plate as t/L . The relative L^2 -norm and H^1 -seminorm of the error are shown in Table 1 and Table 2, respectively, for the three integration meshes and various normalized thicknesses. These results reveal that for the plates with normalized thicknesses $t/L = 0.1$, $t/L = 0.01$ and $t/L = 0.001$, the errors are extremely small and approaching machine precision; thus, it can be said that they pass the zero shear deformation patch test in the numerical sense. Even though the errors for the plate with normalized thickness $t/L = 0.0001$ are not within machine precision, they are sufficiently small to nearly pass the zero shear deformation patch test in the numerical

sense. Also, the absence of the shear-locking phenomenon in the VANP formulation is made evident by these small errors.

Table 1: Relative L^2 -norm of the error for the zero shear deformation patch test.

Mesh	$t/L = 0.1$	$t/L = 0.01$	$t/L = 0.001$	$t/L = 0.0001$
(a)	2.3×10^{-14}	2.6×10^{-12}	1.5×10^{-10}	2.0×10^{-8}
(b)	1.5×10^{-14}	6.3×10^{-13}	6.0×10^{-11}	6.2×10^{-9}
(c)	1.7×10^{-14}	7.5×10^{-13}	4.2×10^{-11}	5.7×10^{-9}

Table 2: Relative H^1 -seminorm of the error for the zero shear deformation patch test.

Mesh	$t/L = 0.1$	$t/L = 0.01$	$t/L = 0.001$	$t/L = 0.0001$
(a)	4.7×10^{-14}	9.7×10^{-13}	5.3×10^{-11}	7.5×10^{-9}
(b)	3.4×10^{-13}	7.0×10^{-13}	5.0×10^{-11}	6.0×10^{-9}
(c)	2.1×10^{-13}	3.9×10^{-13}	2.5×10^{-11}	5.6×10^{-9}

6.2. Circular plate subjected to a uniform load

Fig. 7 depicts a circular plate of radius r that is subjected to a uniform load q and is clamped along its entire boundary. The normalized thickness of the plate is t/L , where t is the thickness of the plate and L is a characteristic length of the physical domain, which in this case is taken as the radius of the plate. The radius of the plate is set to $r = 1$ in so that $L = 1$ in, and the uniform load is set to $q = 1$ psi. The following elastic parameters are considered for the material of the plate: $E_Y = 10.92 \times 10^6$ psi and $\nu = 0.3$. The exact solution for this problem is given by [33]

$$r_x = \frac{x(x^2 + y^2 - 1)}{16D}, \quad r_y = \frac{y(x^2 + y^2 - 1)}{16D},$$

$$w = \frac{(x^2 + y^2)^2}{64D} - (x^2 + y^2) \left(\frac{\lambda^{-1}t^2}{4} + \frac{1}{32D} \right) + \frac{1}{4}\lambda^{-1}t^2 + \frac{1}{64D},$$

where $D = E_Y/(12(1 - \nu^2))$.

The integration meshes that are considered for this problem are shown in Fig. 8.

We start by studying the convergence of the proposed VANP formulation as the integration mesh is refined. For comparison purposes, we also include the convergence results for the mixed triangular finite element of Durán and Liberman [7], which we denote by DL, and the three-node triangular element with cell-based smoothing for bending strain and discrete shear gap method for shear-locking (CS-DSG3) of Nguyen-Thoi et al. [38]. The following normalized thicknesses are considered for the VANP approach: $t/L = \{0.1, 0.01, 0.001, 0.0001\}$. For the DL element, we only show the convergence curve

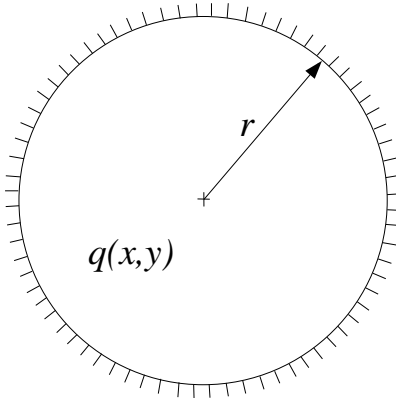


Fig. 7: Circular plate subjected to a uniform load.

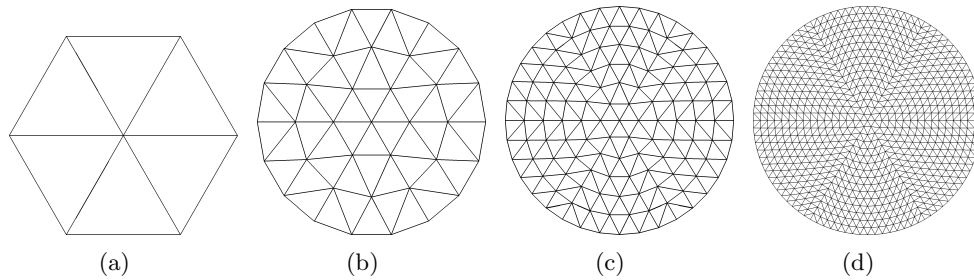


Fig. 8: Integration meshes for the circular plate subjected to a uniform load problem.

for $t/L = 0.0001$ since the curves for the other normalized thicknesses do not change significantly. For the CS-DSG3 element only the curve for $t/L = 0.01$ is shown because this element did not performed well for thinner plates. The convergence rates are shown in Fig. 9, where it is observed that the optimal rates of convergence, 2 and 1, are delivered by the VANP, DL and CS-DSG3 approaches in both the L^2 -norm and the H^1 -seminorm of the error, respectively. However, the accuracy of the VANP formulation is superior to the accuracy of the DL and CS-DSG3 elements.

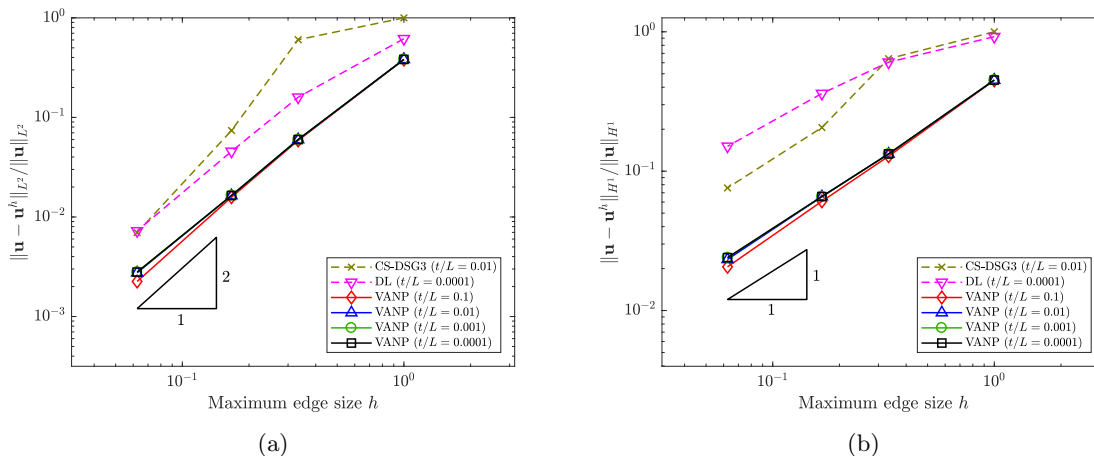


Fig. 9: Rates of convergence for the circular plate subjected to a uniform load. (a) L^2 -norm of the error and (b) H^1 -seminorm of the error for several values of t/L . The VANP, DL and CS-DSG3 approaches deliver the optimal rates of convergence, but the accuracy of the VANP approach is superior to the accuracy of the DL and CS-DSG3 elements.

We also study the sensitivity of the convergence rates to the support parameter (γ) of the maxent basis functions. Three values are considered: $\gamma = \{1.5, 2.0, 3.0\}$, where the largest one results in the smaller support. For this test, the normalized thickness $t/L = 0.0001$ is considered. The convergence rates are presented in Fig. 10, where it is observed that the optimal rates of 2 and 1 are delivered by the VANP formulation in both the L^2 -norm and the H^1 -seminorm of the error, respectively, independently of the basis function support parameter. It is also observed that the VANP accuracy decreases as the support gets smaller, which is a reasonable behavior since as the support gets smaller the maxent basis function approaches to the “hat” finite element basis function [31].

6.3. Square plate subjected to a nonuniform load

In this example, we study the convergence properties of the VANP formulation in a more complicated setting, which includes nonuniform integration meshes and a nonuniform load. As shown in Fig. 11, the problem domain is a square plate that is clamped along its entire

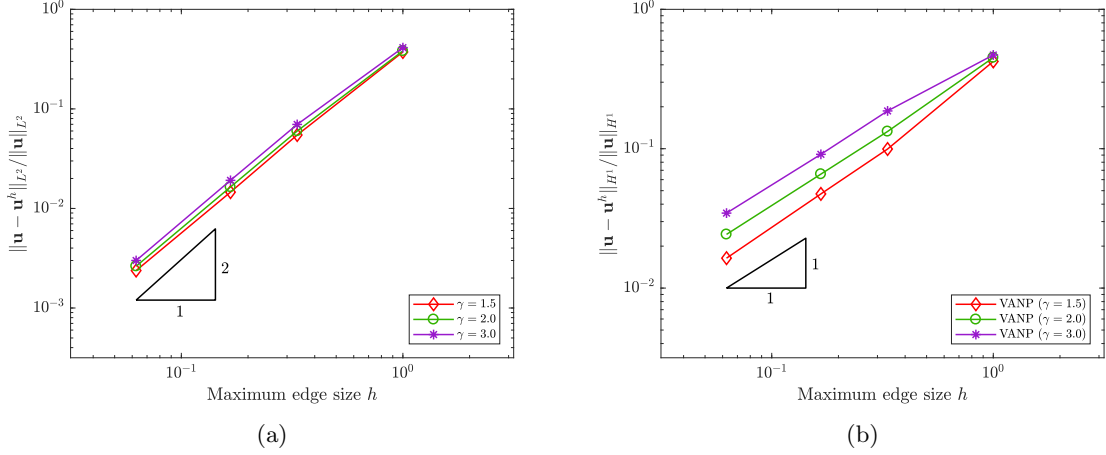


Fig. 10: Influence of the maxent basis function support parameter (γ) on the VANP convergence rates. Three values for γ are considered. Optimal convergence rates in the (a) L^2 norm and (b) the H^1 seminorm of the error are obtained for all these cases.

boundary. The side of the plate is taken as the characteristic length for defining the normalized thickness of the plate as t/L . In this problem, we set the side of the plate to $a = 1$ in so that the characteristic length becomes $L = 1$ in. The following elastic parameters are considered for the material of the plate: $E_Y = 10.92 \times 10^6$ psi and $\nu = 0.3$. The nonuniform load is given by

$$q = \frac{E_Y}{12(1-\nu^2)} [12y(y-1)(5x^2-5x+1)(2y^2(y-1)^2+x(x-1)(5y^2-5y+1)) + 12x(x-1)(5y^2-5y+1)(2x^2(x-1)^2+y(y-1)(5x^2-5x+1))],$$

and the exact solution is [35]:

$$\begin{aligned} r_x &= -y^3(y-1)^3x^2(x-1)^2(2x-1), & r_y &= -x^3(x-1)^3y^2(y-1)^2(2y-1), \\ w &= \frac{1}{3}x^3(x-1)^3y^3(y-1)^3 - \frac{2t^2}{5(1-\nu)} [y^3(y-1)^3x(x-1)(5x^2-5x+1) \\ &\quad + x^3(x-1)^3y(y-1)(5y^2-5y+1)]. \end{aligned}$$

The integration meshes that are considered for this problem are shown in Fig. 12.

The convergence of the VANP approach as the integration mesh is refined is studied for the following normalized thicknesses: $t/L = \{0.1, 0.01, 0.001, 0.0001\}$. The convergence rates are shown in Fig. 13, where it is observed that the optimal rates of convergence, 2 and 1, are delivered by the VANP method in both the L^2 -norm and the H^1 -seminorm of the error, respectively, for the normalized thicknesses $t/L = \{0.01, 0.001, 0.0001\}$. On the

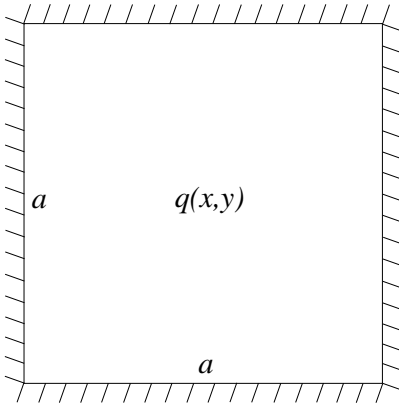


Fig. 11: Square plate subjected to a nonuniform load.

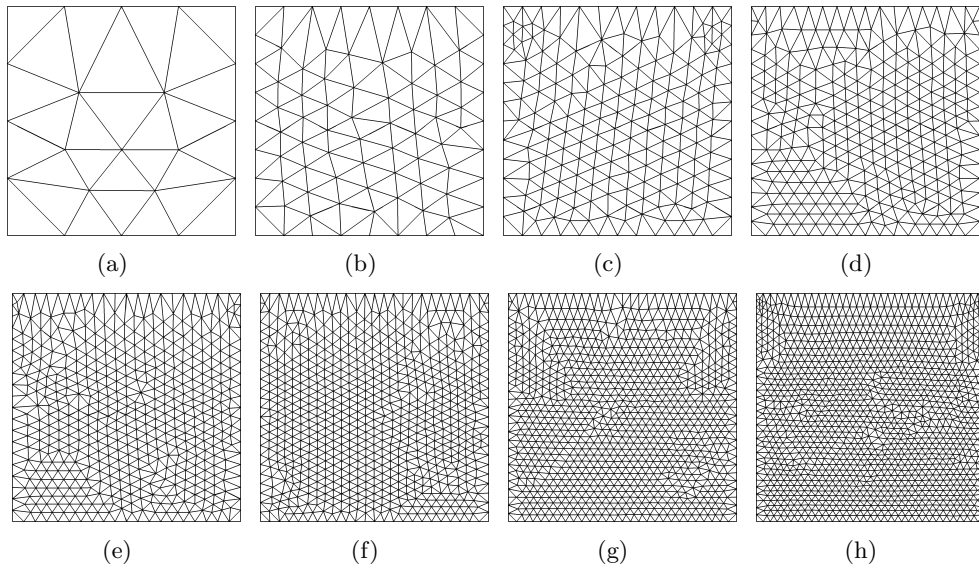


Fig. 12: Integration meshes for the square plate subjected to a nonuniform load problem.

other hand, the convergence rates for $t/L = 0.1$ (the thicker plate case) are above the optimal.

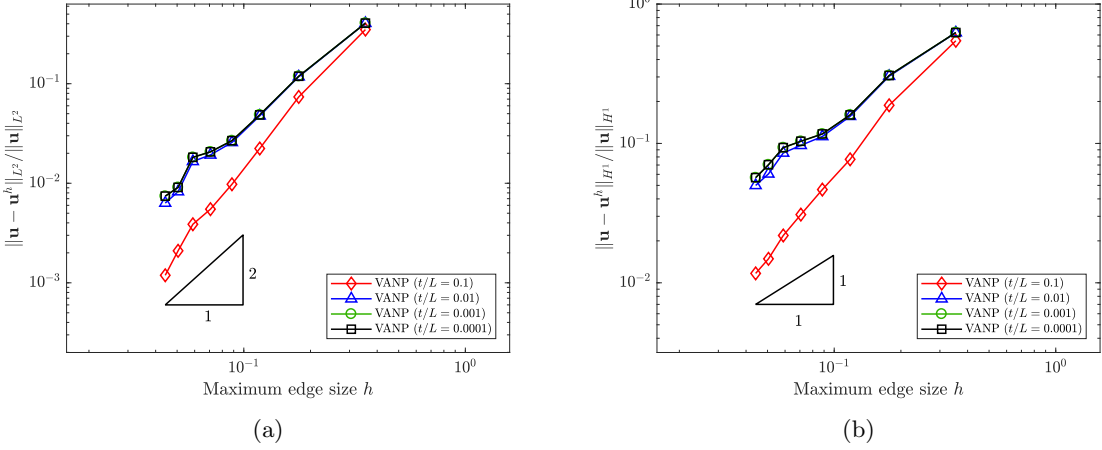


Fig. 13: Rates of convergence for the square plate subjected to a nonuniform load. (a) L^2 -norm of the error and (b) H^1 -seminorm of the error for several values of t/L . The VANP method delivers the optimal rates of convergence for $t/L = \{0.01, 0.001, 0.0001\}$ and above the optimal for $t/L = 0.1$.

To illustrate the influence of the numerical integration in the accuracy of the VANP formulation, we compare the numerical solutions using three integration rules on the triangular cell: the 3-point standard Gauss rule (ST3), the 6-point standard Gauss rule (ST6) and the default VANP's integration scheme (QC3) that was developed in Section 5.3. For this test, the normalized thickness $t/L = 0.0001$ is considered. Fig. 14 depicts the convergence curves for each of these integration schemes. As can be seen, the ST3 scheme fails to converge in both the L^2 -norm and the H^1 -seminorm of the error. Even though the ST6 scheme exhibits much better convergence properties than the ST3 scheme, the optimal performance is observed for the QC3 scheme.

6.4. Parallelogram plate subjected to a uniform load

This example is tailored to show the performance of the VANP formulation when distorted integration meshes are used. The problem consists in a parallelogram plate of unit thickness that is clamped along the entire boundary and subjected to a uniform load, as shown in Fig. 15. The problem parameters are set as follows: $a = 200$ in, $b = 100$ in, $q = 100$ psi. The plates' material parameters are $E_Y = 10.92 \times 10^6$ psi and $\nu = 0.3$. The analytical reference value for the maximum transverse displacement can be found in Ref. [39].

The integration meshes that are considered for this problem are depicted in Fig. 16.

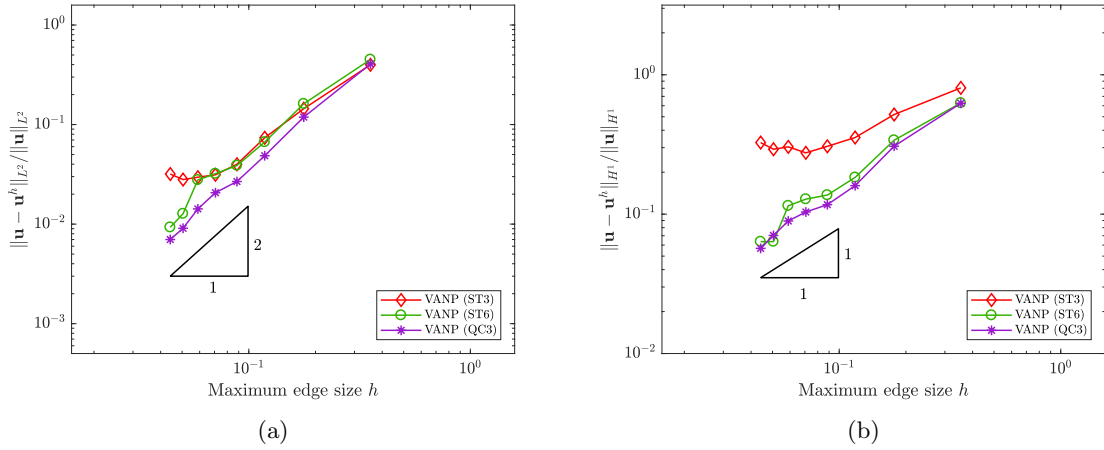


Fig. 14: Influence of the numerical integration on the VANP convergence rates. (a) L^2 -norm of the error and (b) H^1 -seminorm of the error for the ST3, ST6 and QC3 integration schemes. The ST3 scheme fails to converge, the ST6 improves the convergence and the QC3 provides the optimal convergence.

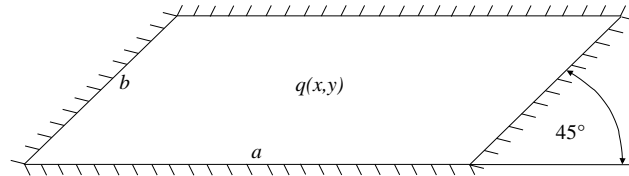


Fig. 15: Parallelogram plate subjected to a uniform load.

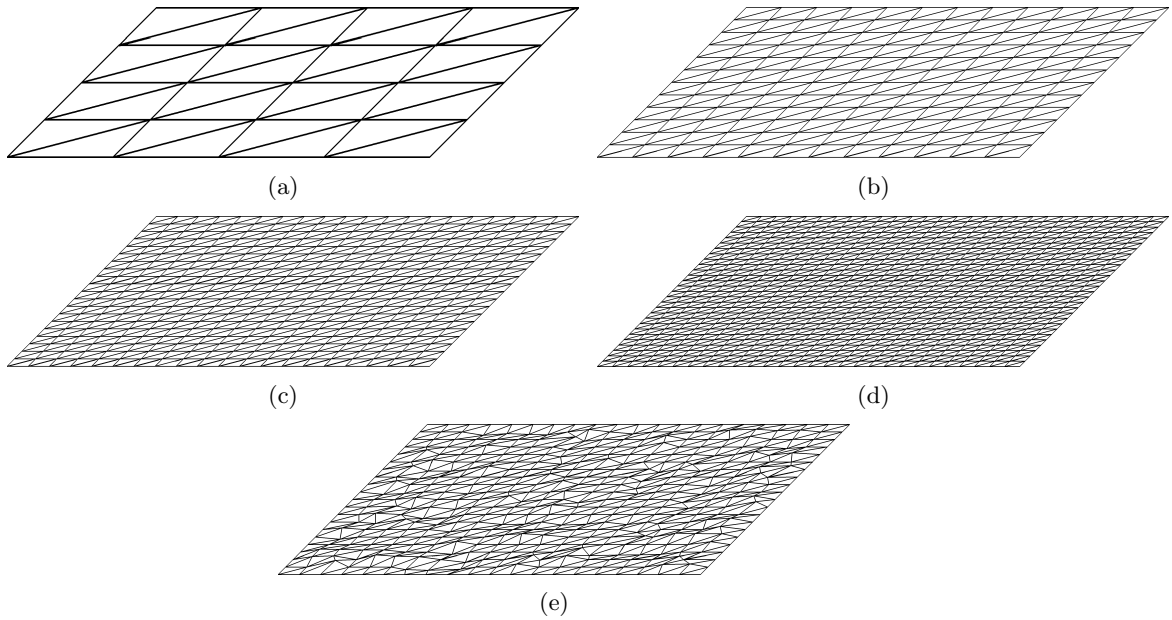


Fig. 16: Integration meshes for the parallelogram plate problem.

The transverse displacement field solution for the integration meshes shown in Figs. 16(d) and 16(e) are presented in Fig. 17. Table 3 summarizes the maximum transverse displacement (located at the center of the plate) that is obtained for each of the integration meshes considered. The table also provides the analytical reference solution. It is observed that the numerical solutions are close to the analytical reference solution for all the integration meshes considered.

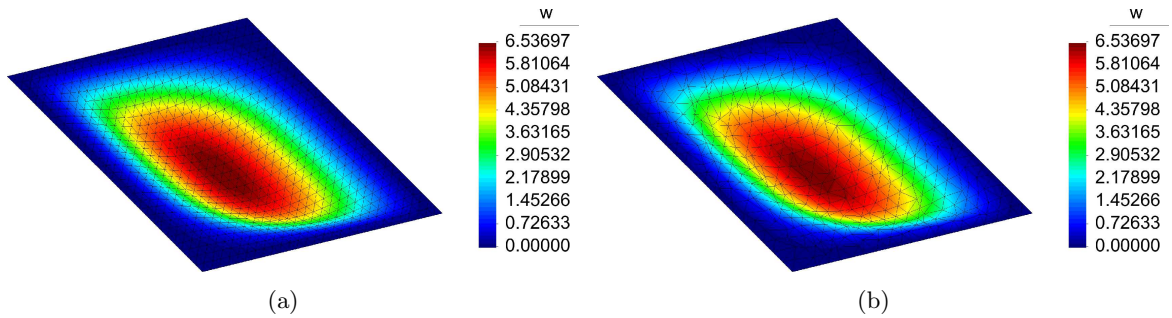


Fig. 17: Transverse displacement solution for the parallelogram plate problem when the integration meshes (a) 16(d) and (b) 16(e) are used.

Finally, once again we show the importance of the QC3 integration scheme that was

Table 3: Transverse displacement for the parallelogram plate problem.

Integration mesh					
16(a)	16(b)	16(c)	16(d)	16(e)	Ref. solution
6.51227	6.52950	6.53558	6.53697	6.52780	6.52000

developed for the VANP formulation. Fig. 18 provides the transverse displacement field solution for the integration mesh shown in Fig. 16(d) when the 3-point standard Gauss rule (ST3) is used. A comparison between the results shown in Fig. 17(a) and Fig. 18 reveals that the ST3 integration scheme leads to an erroneous transverse deflection field.

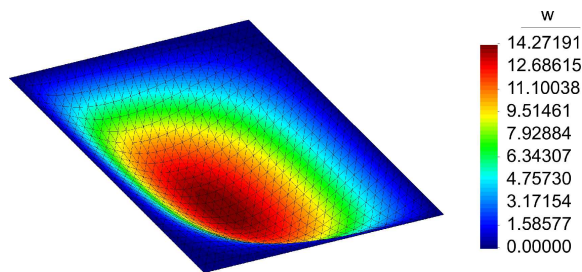


Fig. 18: Parallelogram plate subjected to a uniform load. The use of the 3-point standard Gauss rule (ST3) on the integration mesh 16(d) leads to an erroneous transverse deflection field solution.

6.5. Performance of the scaled transverse shear stress solution

The performance of the recovered scaled transverse shear stress predictions is now assessed. The problem already presented in Section 6.3 is used to this aim. In addition to the unstructured integration meshes shown in Fig. 12, we consider the set of structured integration meshes depicted in Fig. 19. It is recalled that the scaled transverse shear stress variable is directly recovered at the nodes using (20) after the primitive variables are computed.

Fig. 20 presents the L^2 -norm of the nodal error of the scaled transverse shear stress solution. The optimal convergence rate is delivered by the VANP formulation irrespectively of the plate thickness when the structured integration meshes are used (Fig. 20(a)), whereas (with the exception of the thicker plate considered) the convergence rate deteriorates to a rate of about half of its optimal value when the unstructured integration meshes are used (Fig. 20(b)) resulting in degraded accuracy. Notwithstanding this deteriorated performance, the predicted solutions for the primitive variables is excellent and optimally convergent as it was shown in Section 6.3. We also stress that this poor convergence behavior of the scaled transverse shear stress variable should not be a concern as its uniform convergence in the L^2 -norm is in general very difficult to achieve [40].

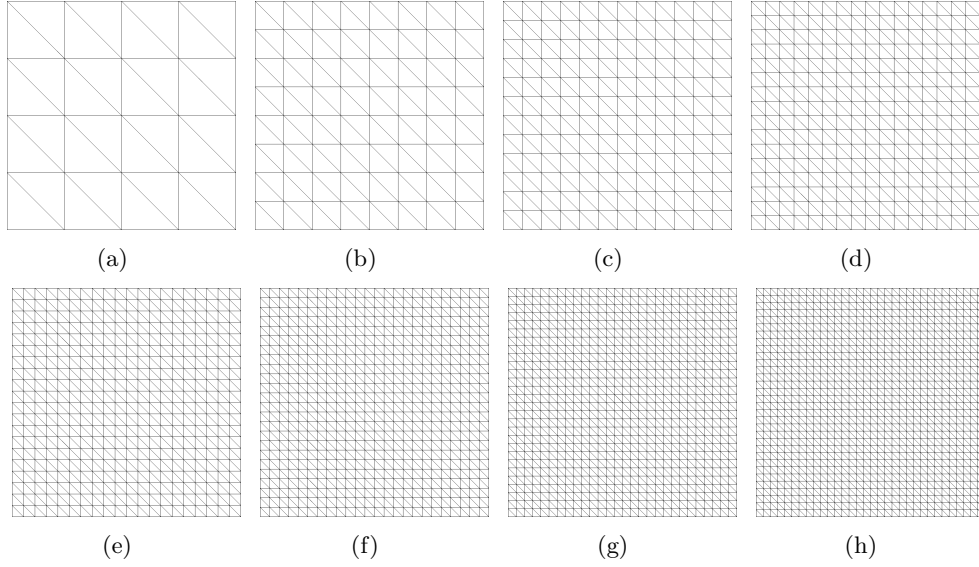


Fig. 19: Structured integration meshes to assess the performance of the transverse shear stress predictions in the VANP formulation.

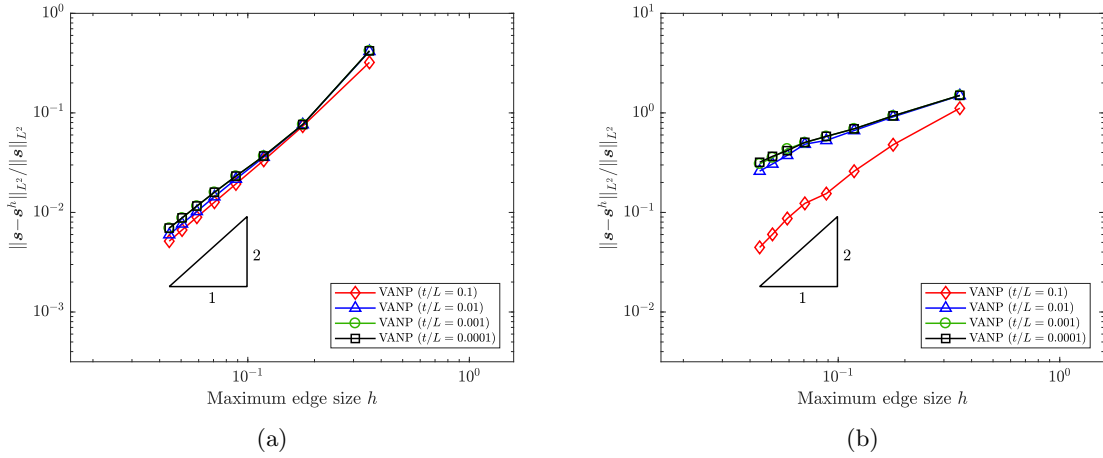


Fig. 20: L^2 -norm of the nodal error of the scaled transverse shear stress solution using (a) structured and (b) unstructured integration meshes in the VANP formulation. For the structured integration meshes, optimal rates of convergence are delivered irrespectively of the plate thickness. The unstructured integration meshes deliver the optimal rate of convergence only for the plate with normalized thickness $t/L = 0.1$, whereas the reminder plates converge at about half of the optimal rate.

7. Concluding Remarks

In this paper, a volume-averaged nodal projection (VANP) method for the solution of Reissner-Mindlin plate problems using primitive variables (i.e., rotations and transverse displacement) was presented. The proposed approach relies on the construction of a projection operator that permits the computation of the shear strain in terms of the primitive variables without presenting shear-locking issues in the limit of the thin-plate theory. The VANP method uses linear maximum-entropy approximations and bubble-like enrichment of the rotation degrees of freedom is added for stability purposes. A special integration scheme on triangular meshes was developed to fix integration errors in the computation of the meshfree stiffness matrices. The assessing of the VANP formulation through several benchmark problems, which included a zero shear deformation patch test, a circular plate subjected to a uniform load, a square plate subjected to a nonuniform load and a parallelogram plate subjected to a uniform load, confirmed the accuracy and optimal convergence of the VANP approach for a wide range of plate thicknesses without experiencing shear-locking issues.

Further improvement of the numerical integration of the stiffness matrix and force vector is being explored by developing a nodal integration technique. From a mathematical standpoint, the construction of error estimates for the VANP approach would help in understanding its optimal performance. The extension of the VANP approach to the von Kármán theory for nonlinear plates is worth being developed and explored. These topics will be addressed in subsequent works.

Acknowledgement

AOB acknowledges the research support of the Chilean National Fund for Scientific and Technological Development (FONDECYT) through grant CONICYT/FONDECYT No. 1181192.

References

- [1] D. N. Arnold, R. S. Falk, Asymptotic analysis of the boundary layer for the Reissner-Mindlin plate model, *SIAM Journal on Mathematical Analysis* 27 (2) (1996) 486–514.
- [2] M. Dauge, E. Faou, Z. Yosibash, Plates and shells: Asymptotic expansions and hierarchical models, *Encyclopedia of Computational Mechanics*. Edited by Erwin Stein, Ren de Borst and Thomas J.R. Hughes, 2004.
- [3] S. Yin, J. S. Hale, T. Yu, T. Q. Bui, S. P. Bordas, Isogeometric locking-free plate element: A simple first order shear deformation theory for functionally graded plates, *Composite Structures* 118 (2014) 121–138.

- [4] K.-J. Bathe, F. Brezzi, S. W. Cho, The MITC7 and MITC9 Plate bending elements, *Computers & Structures* 32 (3-4) (1989) 797–814.
- [5] M. Lyly, R. Stenberg, T. Vihinen, A stable bilinear element for the Reissner-Mindlin plate model, *Computer Methods in Applied Mechanics and Engineering* 110 (3-4) (1993) 343–357.
- [6] K. J. Bathe, E. N. Dvorkin, A four-node plate bending element based on Mindlin/Reissner plate theory and a mixed interpolation, *International Journal for Numerical Methods in Engineering* 21 (2) (1985) 367–383.
- [7] R. Durán, E. Liberman, On mixed finite element methods for the Reissner-Mindlin plate model, *Mathematics of Computation* 58 (198) (1992) 561–573.
- [8] K.-U. Bletzinger, M. Bischoff, E. Ramm, A unified approach for shear-locking-free triangular and rectangular shell finite elements, *Computers & Structures* 75 (3) (2000) 321–334.
- [9] B. M. Donning, W. K. Liu, Meshless methods for shear-deformable beams and plates, *Computer Methods in Applied Mechanics and Engineering* 152 (1-2) (1998) 47–71.
- [10] W. Kanok-Nukulchai, W. Barry, K. Saran-Yasoontorn, P. H. Bouillard, On elimination of shear locking in the element-free Galerkin method, *International Journal for Numerical Methods in Engineering* 52 (7) (2001) 705–725.
- [11] L. Beirão da Veiga, A. Buffa, C. Lovadina, M. Martinelli, G. Sangalli, An isogeometric method for the Reissner-Mindlin plate bending problem, *Computer Methods in Applied Mechanics and Engineering* 209–212 (0) (2012) 45–53.
- [12] R. Echter, B. Oesterle, M. Bischoff, A hierarchic family of isogeometric shell finite elements, *Computer Methods in Applied Mechanics and Engineering* 254 (2013) 170–180.
- [13] L. Beirão da Veiga, C. Lovadina, A. Reali, Avoiding shear locking for the Timoshenko beam problem via isogeometric collocation methods, *Computer Methods in Applied Mechanics and Engineering* 241-244 (2012) 38–51.
- [14] J. S. Hale, P. M. Baiz, A locking-free meshfree method for the simulation of shear-deformable plates based on a mixed variational formulation, *Computer Methods in Applied Mechanics and Engineering* 241-244 (2012) 311–322.
- [15] C. Tiago, V. M. A. Leito, Eliminating Shear-Locking in Meshless Methods: A Critical Overview and a New Framework for Structural Theories, in: V. M. A. Leitão, C. J. S. Alves, C. A. Duarte (Eds.), *Advances in Meshfree Techniques*, no. 5 in *Computational Methods in Applied Sciences*, Springer Netherlands, 2007, pp. 123–145.

- [16] D. Wang, J.-S. Chen, Locking-free stabilized conforming nodal integration for meshfree Mindlin-Reissner plate formulation, *Computer Methods in Applied Mechanics and Engineering* 193 (12–14) (2004) 1065–1083.
- [17] J. Cho, S. Atluri, Analysis of shear flexible beams, using the meshless local Petrov-Galerkin method, based on a locking-free formulation, *Engineering Computations* 18 (1/2) (2001) 215–240.
- [18] J. S. Hale, Meshless methods for shear-deformable beams and plates based on mixed weak forms, Ph.D. thesis, Imperial College London, London, United Kingdom (2013).
- [19] A. Ortiz, M. A. Puso, N. Sukumar, Maximum-entropy meshfree method for compressible and near-incompressible elasticity, *Computer Methods in Applied Mechanics and Engineering* 199 (25–28) (2010) 1859–1871.
- [20] A. Ortiz, M. A. Puso, N. Sukumar, Maximum-entropy meshfree method for incompressible media problems, *Finite Elements in Analysis and Design* 47 (6) (2011) 572–585.
- [21] A. Ortiz-Bernardin, J. S. Hale, C. J. Cyron, Volume-averaged nodal projection method for nearly-incompressible elasticity using meshfree and bubble basis functions, *Computer Methods in Applied Mechanics and Engineering* 285 (2015) 427–451.
- [22] F. Brezzi, On the existence, uniqueness and approximation of saddle-point problems arising from Lagrangian multipliers, *RAIRO Anal. Numer* 8 (2) (1974) 129–151.
- [23] D. Arnold, F. Brezzi, M. Fortin, A stable finite element for the Stokes equations, *Calcolo* 21 (4) (1984) 337–344.
- [24] B. P. Lamichhane, From the Hu-Washizu formulation to the average nodal strain formulation, *Computer Methods in Applied Mechanics and Engineering* 198 (49–52) (2009) 3957–3961.
- [25] D. Arnold, F. Brezzi, Some new elements for the Reissner-Mindlin plate model, *Boundary value problems for partial differential equations and applications* (1993) 287–292.
- [26] D. Boffi, C. Lovadina, Analysis of new augmented Lagrangian formulations for mixed finite element schemes, *Numerische Mathematik* 75 (4) (1997) 405–419.
- [27] C. Lovadina, A New Class of Mixed Finite Element Methods for Reissner-Mindlin Plates, *SIAM Journal on Numerical Analysis* 33 (6) (1996) 2457–2467.
- [28] Q. Duan, X. Li, H. Zhang, T. Belytschko, Second-order accurate derivatives and integration schemes for meshfree methods, *International Journal for Numerical Methods in Engineering* 92 (4) (2012) 399–424.

- [29] S. Song, C. Niu, A mixed finite element method for the Reissner-Mindlin plate, *Boundary Value Problems* 2016 (1) (2016) 194.
- [30] N. Sukumar, R. W. Wright, Overview and construction of meshfree basis functions: from moving least squares to entropy approximants, *International Journal for Numerical Methods in Engineering* 70 (2) (2007) 181–205.
- [31] M. Arroyo, M. Ortiz, Local maximum-entropy approximation schemes: a seamless bridge between finite elements and meshfree methods, *International Journal for Numerical Methods in Engineering* 65 (13) (2006) 2167–2202.
- [32] D. Boffi, F. Brezzi, L. F. Demkowicz, R. G. Durán, R. S. Falk, M. Fortin, *Mixed Finite Elements, Compatibility Conditions, and Applications*. Edited by D. Boffi and L. Gastaldi. *Lecture Notes in Mathematics*, Springer-Verlag, Berlin Fondazione C.I.M.E., Florence, 2008.
- [33] R. S. Falk, T. Tu, Locking-free finite elements for the Reissner-Mindlin plate, *Mathematics of Computation* 69 (231) (2000) 911–928.
- [34] O. C. Zienkiewicz, R. L. Taylor, *The Finite Element Method for Solid and Structural Mechanics*, sixth Edition, Butterworth-Heinemann, Oxford, UK, 2005.
- [35] C. Chinosi, C. Lovadina, Numerical analysis of some mixed finite element methods for Reissner-Mindlin plates, *Computational Mechanics* 16 (1) (1995) 36–44.
- [36] A. Ortiz-Bernardin, M. A. Puso, N. Sukumar, Improved robustness for nearly-incompressible large deformation meshfree simulations on Delaunay tessellations, *Computer Methods in Applied Mechanics and Engineering* 293 (2015) 348–374.
- [37] W. Chen, J. Wang, J. Zhao, Functions for patch test in finite element analysis of the Mindlin plate and the thin cylindrical shell, *Science in China Series G: Physics, Mechanics and Astronomy* 52 (5) (2009) 762–767.
- [38] T. Nguyen-Thoi, P. Phung-Van, H. Nguyen-Xuan, C. Thai-Hoang, A cell-based smoothed discrete shear gap method using triangular elements for static and free vibration analyses of Reissner-Mindlin plates, *International Journal for Numerical Methods in Engineering* 91 (7) (2012) 705–741.
- [39] E. H. Mansfield, *The bending and stretching of plates*, 2nd Edition, Cambridge University Press, New York, NY, 1989.
- [40] D. Chapelle, K.-J. Bathe, *The Finite Element Analysis of Shells - Fundamentals*, 2nd Edition, Springer, Berlin, Heidelberg, 2011.